

# ***GENERAL PURPOSE ENGINE***

**GXH50**

**PARTS CATALOGUE**

**6**

---

FOREWORD INDEX

**1**

---

ENGINE GROUP

**2**

---

PART NUMBER INDEX

**3**

---

PART NAME INDEX

**4**

---



### Instruction for use of parts catalogue

- **This parts catalogue was prepared based on the latest information available as of June 10, 2004.**
- See the parts catalogue news for any revision that is made after June 10, 2004.
- **Always specify the part number when ordering a part.**
  - Check the model, type, serial numbers, color, maker, and the size as needed before ordering a part.
  - Note that the illustrations (part drawings) can differ from the actual parts in shape. They are given just to help you to refer to the parts.
- **When modifications or additions to this parts catalogue are made, a revised edition will be issued at an appropriate time, with successively progressing revision numbers on the cover. We recommend obtaining such revisions in order to keep your parts catalogue up-to-date at all times. To check whether a parts catalogue revision has been issued, please contact your Honda distributor.**

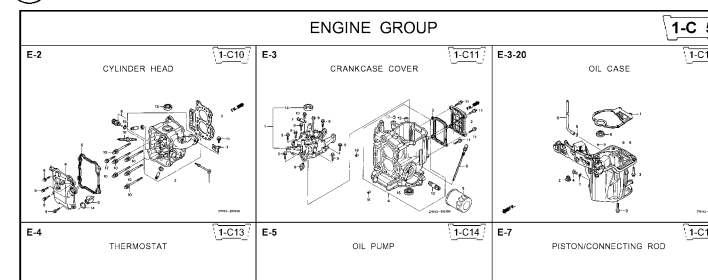
Initial version issue date June 10, 2004  
**Honda Motor Co., Ltd.**

### CONTENTS

	Page	Address No.	
• How to refer to the part information .....	2	B 2	<b>1</b>
• Part catalogue structure .....	3	B 3	
• When the parts were revised .....	4	B 4	
• Abbreviations used in the parts catalogue.....	4	B 4	
• How to check the part block and serial numbers.....	5	B 5	
• Models, parts catalogue codes and applicable serial numbers .....	6	B 6	
• Features of each type .....	8	B 8	
• Fuel hose, general purpose hoses and vinyl hose .....	9	B 9	
• Illustrated index .....	10	B10	
• ENGINE GROUP .....	12	C 1	<b>2</b>
• PART NO. INDEX.....	35	E 1	<b>3</b>
• PART NAME INDEX.....	37	F 1	<b>4</b>

## How to refer to the part information

## A Reference with "Illustrated index"



## B Reference with "Part number index"

Part Number	Address	Page	Ref.	Part Number	Address	Page
06000				15212-ZW9-000	1-C14	3C
06316-ZW9-000	1-G9	88	1	15220-ZW9-003	1-C14	3C
11000				15332-ZW9-000	1-E8	55
11300-ZW9-405	1-C11	27	1	15332-ZW9-A30	1-E11	58
11300-ZW9-406	1-C11	27	1	15400-PFB-004	1-C11	27
11340-ZW9-000	1-C11	27	2	15422-ZW9-000	1-C14	3C
11342-ZW9-000	1-C11	27	3	15473-881-000	1-C14	3C
11381-ZW9-003	1-C12	28	1	15474-ZW9-000	1-C14	3C
				15611-921-000	1-C10	26
				15655-ZW9-000	1-C11	27
12000				16000		
12000-ZW9-405ZA	1-C11	27	4	16010-ZV4-005	1-D4	36
12155-ZV4-A00	1-C13	29	1	16011-ZV4-005	1-D4	36
12166-ZW9-000	1-C10	26	1	16013-ZW9-003	1-D4	36
12209-GB4-681	1-C16	32	1	16016-ZW9-003	1-D4	36
12210-ZW9-405ZA	1-C10	26	2	16016-ZW9-721	1-D4	36
12216-ZE2-300	1-E8	55	1	16023-ZW9-003	1-D4	36
	1-E11	58	1	16024-ZV4-650	1-D4	36
				16028-ZV4-650	1-D4	36

## C Reference with "Part name index"

Part name	Address	Page	Ref.
[ A ]			
ABSORBER, FUEL	1-E15	62	5
ARMATURE COMP.	1-D11	43	7
ARM COMP., LINK JOINT	1-G6	85	18
ARM COMP., SHIFT LINK	1-G6	85	14
ARM COMP., TILT	1-F15	79	20
ARM, FUEL PUMP ROCKER	1-C16	32	4
ARM, REVERSE LOCK	1-F15	79	18
ARM, SHIFT LINK	1-F11	74	7
ARM, STOPPER	1-D1	33	12
ARM, THROTTLE REMOTE	1-F11	74	6
ARM, VALVE ROCKER	1-C16	32	3
[ B ]			
BAG, TOOL, 160MM	1-G5	84	10
BAND	1-G6	86	37
BAND B1, WIRE	1-F6	69	1
BAND, CORD	1-F3	67	18
BAND, TUBE CLIP, 11MM	1-E15	63	20
BAND, TUBE CLIP, 12.5MM	1-E15	63	19

Address No. 1-C10

Block No. E-2

Ref No.

Service item F.R.T.

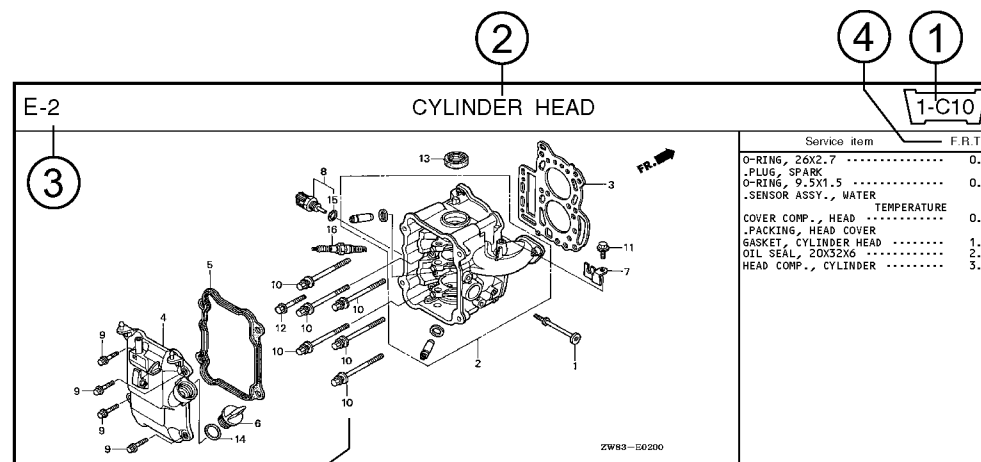
Service item	F.R.T.
O-RING, 26X2.7	0.1
PLUG, SPARK	0.2
O-RING, 9.5X1.5	0.2
SENSOR ASSY., WATER	0.3
COVER COMP., HEAD	1.8
PACKING, HEAD COVER	2.4
GASKET, CYLINDER HEAD	3.1
OIL SEAL, 20X32X6	
HEAD COMP., CYLINDER	

Ref. No.	Part No.	Description	Reqd. QTY	Serial No.	Parts catalogue code
			BF 9901 BFP 9901 BF 1001 BFP 1001 BF 1081 BFP 1081		
1	12166-ZW9-000	STOPPER, ENGINE SIDE	2 2 2 2 2 2		
2	12210-ZW9-000ZA	HEAD COMP., CYLINDER	1 1 1 1 1 1		
3	12251-ZW9-003	GASKET, CYLINDER HEAD	1 1 1 1 1 1		
4	12310-ZW9-000	COVER COMP., HEAD	1 1 1 1 1 1		
5	12312-ZW9-000	PACKING, HEAD COVER	1 1 1 1 1 1		
6	15611-921-000	CAP, OIL (NO GAUGE)	1 1 1 1 1 1		
7	16617-ZW9-000	HOLDER, CABLE	1 1 1 1 1 1		SC,SG
	16617-ZW9-010		1 1 1 1 1 1	1001800	LHC,LHD
			1 1 1 1 1 1	1001801	LHC,LHD
8	35673-ZW5-003	SENSOR ASSY., WATER	1 1 1 1 1 1		
9	90003-ZW9-000	BOLT, FLANGE, 6X22	4 4 4 4 4 4		
10	90007-ZW9-003	BOLT, FLANGE, 8X83	6 6 6 6 6 6		
11	90011-ZW9-000	BOLT, FLANGE, 6X14(CT200)	1 1 1 1 1 1		
12	90020-ZW9-000	BOLT, FLANGE, 8X40	2 2 2 2 2 2		
13	91002-KJ9-003	OIL SEAL, 20X32X6	1 1 1 1 1 1		
14	91301-805-000	O-RING, 26X2.7	1 1 1 1 1 1		
15	91307-PK2-005	O-RING, 9.5X1.5(HONDA KIKAKI)	1 1 1 1 1 1		
16	98059-55916	PLUG, SPARK (CR5EH-9)	2 2 2 2 2 2		
	98059-55926	PLUG, SPARK (U16FER9)	2 2 2 2 2 2		

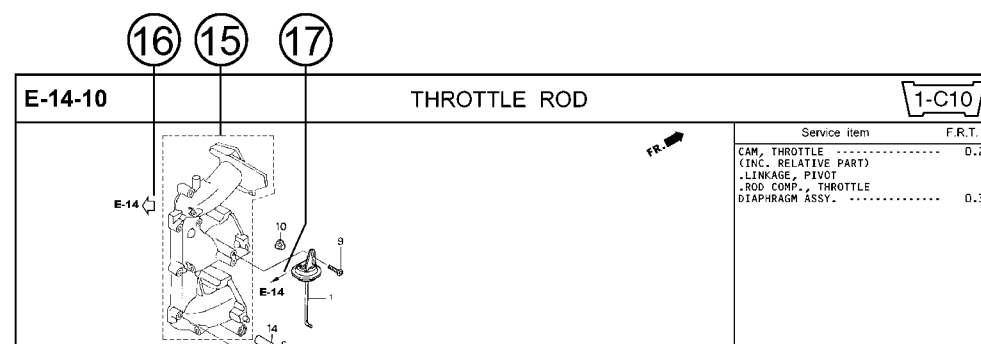
Page No.

2004.09.20 E

## Part catalogue structure



Ref. No.	Part No.	Description	Reqd. QTY						Serial No.	Parts catalogue code
			BF	BFP	BF	BFP	BF	BFP		
1	12166-ZW9-000	STOPPER, ENGINE SIDE	2	2	2	2	2	2		
2	12210-ZW9-000ZA	HEAD COMP., CYLINDER								
		*NHS*	1	1	1	1	1	1		
3	12251-ZW9-003	GASKET, CYLINDER HEAD	1	1	1	1	1	1		
4	12310-ZW9-000	COVER COMP., HEAD	1	1	1	1	1	1		
5	12312-ZW9-000	PACKING, HEAD COVER	1	1	1	1	1	1		
6	15611-921-000	CAP, OIL	1	1	1	1	1	1		
		(NO GAUGE)								
7	16617-ZW9-000	HOLDER, CABLE	1	1	1	1	1	1		
	16617-ZW9-010		1	1	1	1	1	1		
									SC,S6	
									1001800 LHC,LHD	



## ① Address number

- Address No. is provided (in place of the page No.) to help you refer to the part with the part No. or part name.

## ② Block title ③ Block number

## ④ Service item/Flat rate time

## ⑤ Reference number

- Title number marked with the parenthesis or parentheses indicates that it continues from the previous page.

## ⑥ Part number ⑦ Honda color code

## ⑧ Description

## ⑨ Assemblies

- Sections framed with broken lines in the exploded view drawings are available as complete assemblies. (Their individual parts can also be obtained.)

## ⑩ Color description

## ⑪ Note

- Notes are shown with the parentheses in the part name column.

## ⑫ Required quantity


- Required QTY shown in the parenthesis or parentheses indicates the optional part.
- Required QTY marked with "N" Indicates the optional part that should be selected as needed.
- Required QTY indicates the number of the part used in the block.

## ⑬ Serial number


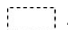
## ⑭ Type

- When the type column is blank, it indicates that the part is applicable to all types.
- As the type of the actual unit may differ from the "parts catalogue, type" please refer to "Models, types and applicable serial numbers" for confirmation.


## ⑮

- Parts enclosed within a dotted line  are covered in a different block.

## ⑯

- A hollow arrow  indicates the block No. for the parts enclosed within a dotted line .

## ⑰

- A solid arrow  indicates the block No. the part in question is connected to.

### When the parts were revised



Be sure to check the serial number!!



Ref. No.	Part No.	Description	Reqd. QTY						Serial No.
			BF	BFP	BF	BFP	BF	BFP	
1	12166-ZW9-000	STOPPER, ENGINE SIDE .....	2	2	2	2	2	2	
2	12210-ZW9-000ZA	HEAD COMP., CYLINDER *NH8*.....DARK GRAY	1	1	1	1	1	1	
3	12251-ZW9-003	GASKET, CYLINDER HEAD .....	1	1	1	1	1	1	
4	12310-ZW9-000	COVER COMP., HEAD .....	1	1	1	1	1	1	
5	12312-ZW9-000	PACKING, HEAD COVER .....	1	1	1	1	1	1	
6	15611-921-000	CAP, OIL (NO GAUGE) .....	1	1	1	1	1	1	
7	16617-ZW9-000	HOLDER, CABLE (###).....	1	1	1	1	1	1	
	16617-ZW9-010	.....	1	1	1	1	1	1	

The number has been used from the initial model without revision.

When shown at the left side, it is applicable to the models of No.1001801 and the subsequent numbers.

When shown at the right side, it is applicable to the models up to No.1001800.

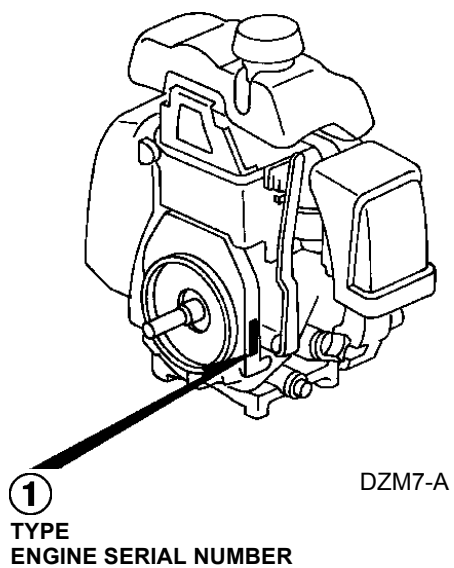
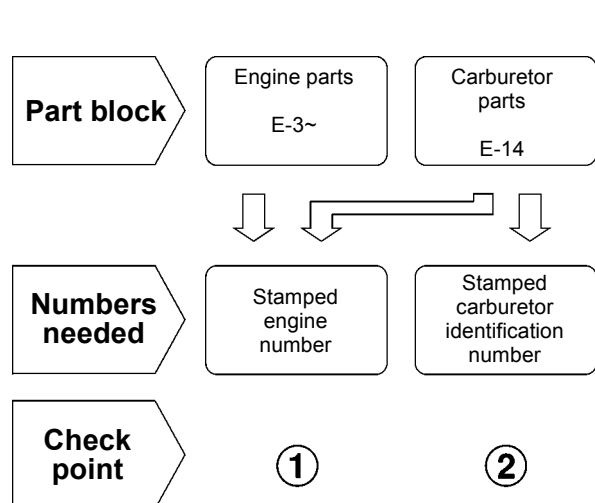
• The parts listed with "###" at the end of the parts name have limited supply period (parts not for sale).

### Abbreviations used in the parts catalogue

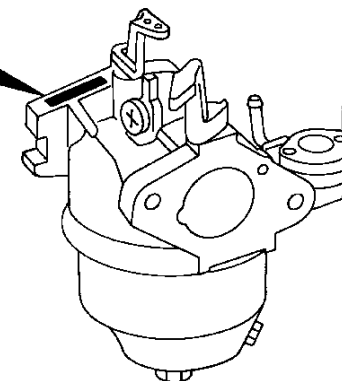
• The following abbreviations are used in the parts name column.

A .....	Ampere	FR. ....	Front
A.C. ....	Alternating current	IN. ....	Inlet
ASSY. ....	Assembly	L (100L) ..	Link (100 Links)
AT. ....	Automatic transmission	L. ....	Left
C.D.I. ....	Capacitive discharge ignition	MM ....	Millimeter
COMP. ...	Complete	MT. ....	Manual Transmission
D.C. ....	Direct current	P.T.O. ....	Power take off
EX. ....	Exhaust	R. ....	Right
G.F.C.I ...	Ground fault circuit interruptor	RR. ....	Rear
HEX. ....	Hexagonal	STD. ....	Standard
H.S.T. ....	Hydrostatic transmission	T (22T) ...	Tooth (22 Teeth)
		V .....	Volt
		W .....	Watt

### How to check the part block and serial numbers



②  
CARBURETOR  
IDENTIFICATION NUMBER





### Models, parts catalogue codes and applicable serial numbers

- Models, parts catalogue codes and applicable serial Nos. given in this parts catalogue can be identified as follows.

Model	Type	Parts catalogue type	Applicable engine serial No.	Applicable carburetor identification No.	Model	Type	Parts catalogue type	Applicable engine serial No.	Applicable carburetor identification No.
GXH50	QC	QC	GCAL-1000001~1299999	BF32E A / C	GXH50	QXA	QXA	GCAL-1000001~1299999	BF32E A / C
		QC/A	GCAL-1300001~1499999	BF32E C			QXA/A	GCAL-1300001~1499999	BF32E C
		QC/B	GCAL-1500001~				QXA/B	GCAL-1500001~	
	QEB2	QEB2	GCAL-1300001~1499999	BF32G A		SD	SD	GCAL-1000001~1299999	BF32D A BF32E A / C
		QEB2/A	GCAL-1500001~				SD/A	GCAL-1300001~1499999	BF32E C
	QEB4	QEB4	GCAL-1300001~1499999				SD/B	GCAL-1500001~	
		QEB4/A	GCAL-1500001~			SE	SE	GCAL-1000001~1299999	BF32A A BF32C A / B
	QHA	QHA	GCAL-1000001~1299999	SE/A			GCAL-1300001~1499999	BF32C B	
		QHA/A	GCAL-1300001~1499999	SE/B			GCAL-1500001~		
		QHA/B	GCAL-1500001~	SJ		SJ	GCAL-1000001~1299999	BF32D A BF32E A / C	
	QHE	QHE	GCAL-1000001~1299999			SJ/A	GCAL-1300001~1499999	BF32E C	
		QHE/A	GCAL-1300001~1499999			SJ/B	GCAL-1500001~		
		QHE/B	GCAL-1500001~	SJK		SJK	GCAL-1000001~1299999		
	QHM	QHM	GCAL-1300001~1499999			SJK/A	GCAL-1300001~1499999		
		QHM/A	GCAL-1500001~			SJK/B	GCAL-1500001~		
	QU	QU	GCAL-1000001~1299999	BF32D A BF32E A / C		SPB	SPB	GCAL-1000001~1299999	BF32C B
		QU/A	GCAL-1300001~1499999	BF32E C			SPB/A	GCAL-1300001~1499999	
		QU/B	GCAL-1500001~				SPB/B	GCAL-1500001~	

Model	Type	Parts catalogue type	Applicable engine serial No.	Applicable carburetor identification No.
GXH50	SPB4	SPB4	GCAL-1300001~1499999	BF32C B
		SPB4/A	GCAL-1500001~	
	SXA	SXA	GCAL-1000001~1299999	BF32C A / B
		SXA/A	GCAL-1300001~1499999	BF32C B
		SXA/B	GCAL-1500001~	

\* Of carburetor identification numbers, only the portions underlined in the example below are used for registration.

BF 32E A KC ㇏

### Features of each type

- See the following table for the features of each type.

Model Type		GXH50														
		QC	QEB2	QEB4	QHA	QHE	QHM	QU	QXA	SD	SE	SJ	SJK	SPB	SPB4	SXA
Specifications	15mm Ø Straight									●	●	●	●	●	●	●
	15.8mm Ø Straight	●	●	●	●	●	●	●	●							
Fuel tank		●	●	●				●	●	●	●	●	●	●	●	●
Engine stop switch		●	●	●				●	●	●	●	●	●			●
Oil alert									●							●

## Fuel hose, general purpose hoses and vinyl hose

- The standard part fuel hose, general purpose hose and vinyl hose may be substituted by the coiled bulk part.
- When ordering the standard part fuel hose, general purpose hose and vinyl hose use the bulk part number written in the parts catalog in brackets ( ) underneath the part name.
- When exchanging the hose, cut and use at the specified length as mentioned in the part name.  
(For the method of cutting the bulk part, and method of filling out orders etc., please refer to the instructions issued with the bulk part.)

### Bulk part number of fuel hose, general purpose hose and vinyl hose.

Example: 9 5 0 0 1 - 7 5 0 0 1 - 5 0 M

Bulk part number:

Refers to the bulk part.

Marking code (fuel hose and general purpose hose)

Change code (Vinyl hose)

Indicates number mark or change sequence, however, the code for the bulk part must be strictly 0 (zero).

Types of code:

- Fuel hose
  - 2: Red outside braid (3 mm inside dia. only)
  - 5: Black inside braid
  - 3: Red (3 mm inside dia. only)
  - 4: Ash gray with red stripe (3 mm inside dia. only)
  - 6: Black

- General hose
  - 1: Ash gray
  - 2: Ash gray
  - 3: Black
  - 5: Black

- Vinyl hose
  - 1: Clear
  - 2: Black
  - 3: Light red
  - 6: Light red
  - 7: Pale black

Lengths:

001: 1 m (standard)  
003: 3 m  
008: 8 m

Application or specification of some parts is not settled.

I.D code: (fuel hose and general purpose hose)

30: 3.0 mm  
35: 3.5 mm  
45: 4.5 mm

50: 5.0 mm  
55: 5.3 mm, 5.5 mm  
65: 6.5 mm

70: 7.0 mm  
75: 7.3 mm, 7.5 mm  
80: 8.0 mm

11: 11 mm  
91: 12 (outside dia. 15) mm  
92: 12 (outside dia. 16) mm

12: 12 (outside dia. 17) mm  
14: 14 mm  
17: 17 mm

ID./OD. code: (vinyl hose)

01: ID. 2.9, OD. 6.8 mm  
03: ID. 3.0, OD. 6.0 mm  
05: ID. 3.5, OD. 6.5 mm  
07: ID. 4.0, OD. 7.0 mm  
08: ID. 4.5, OD. 6.5 mm  
09: ID. 4.5, OD. 8.0 mm

12: ID. 5.0, OD. 7.0 mm  
10: ID. 5.0, OD. 8.0 mm  
11: ID. 5.0, OD. 9.0 mm  
14: ID. 6.0, OD. 9.0 mm  
17: ID. 7.0, OD. 9.0 mm  
19: ID. 7.0, OD. 11.0 mm

21: ID. 8.0, OD. 9.0 mm  
23: ID. 8.0, OD. 12.0 mm  
25: ID. 9.0, OD. 11.0 mm  
27: ID. 9.0, OD. 13.0 mm  
33: ID. 10.0, OD. 14.0 mm  
36: ID. 11.0, OD. 13.0 mm

37: ID. 11.0, OD. 15.0 mm  
38: ID. 12.0, OD. 13.0 mm  
39: ID. 12.0, OD. 14.0 mm  
40: ID. 12.0, OD. 16.0 mm  
43: ID. 13.0, OD. 15.0 mm  
45: ID. 14.0, OD. 18.0 mm

50: ID. 16.0, OD. 19.0 mm  
55: ID. 17.5, OD. 20.5 mm  
60: ID. 22.0, OD. 27.0 mm

Hose type:

- 1: Fuel hose
- 3: Vinyl hose
- 5: General hose

⊙ **CAUTION:** It is **DANGEROUS** to confuse the fuel hose with the general purpose hose or vinyl hose.

Never use a general purpose hose or vinyl hose in place of a fuel hose or vice versa. Always use the correct bulk part in the parts catalogue, according to the service manual or the instructions issued with the bulk part.

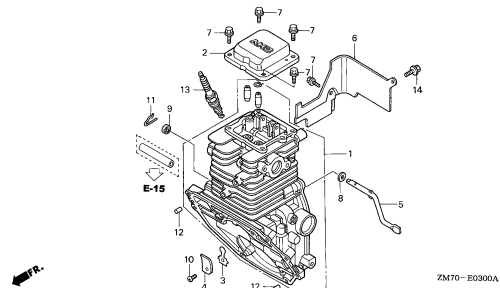
# ENGINE GROUP

**B10**

**E-3**

CYLINDER BARREL

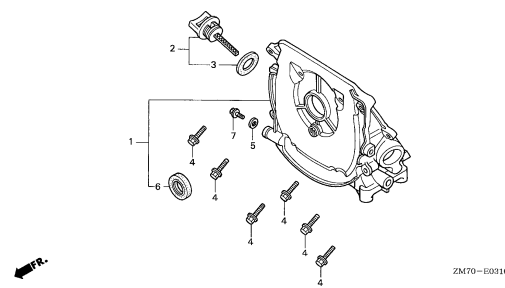
**C 1**



**E-3-10**

OIL CASE

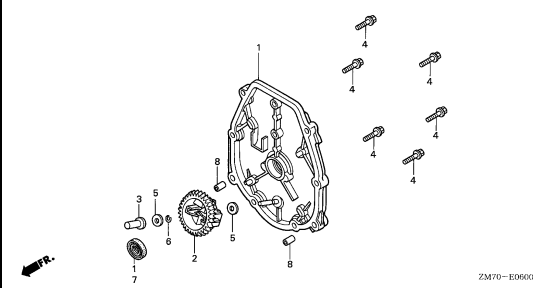
**C 3**



**E-6**

CRANKCASE COVER

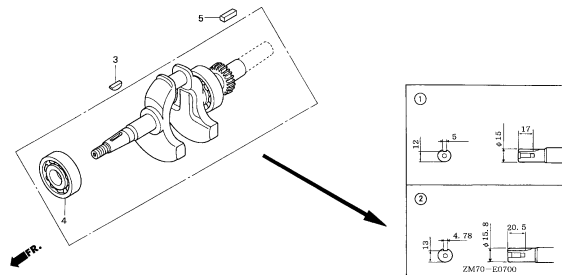
**C 4**



**E-7**

CRANKSHAFT

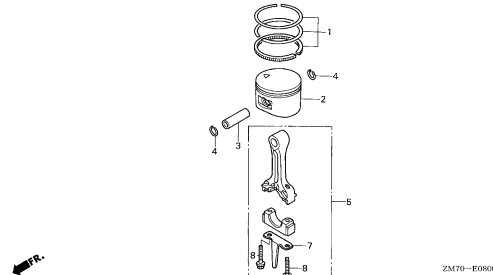
**C 5**



**E-8**

PISTON/CONNECTING ROD

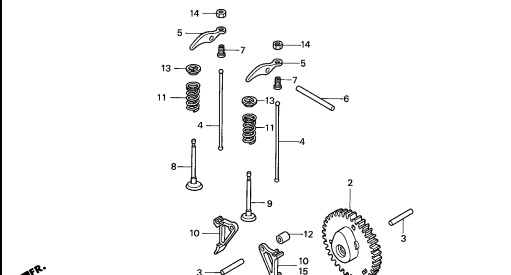
**C 6**



**E-9**

CAMSHAFT

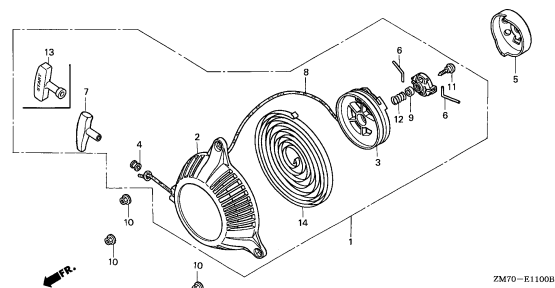
**C 7**



**E-11**

RECOIL STARTER

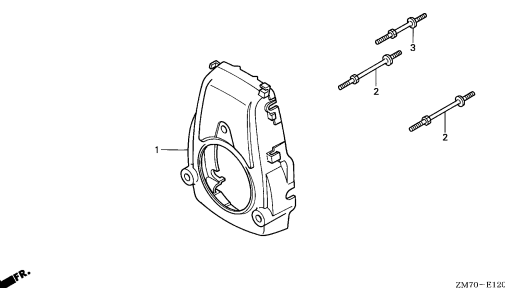
**C 9**



**E-12**

FAN COVER

**C10**



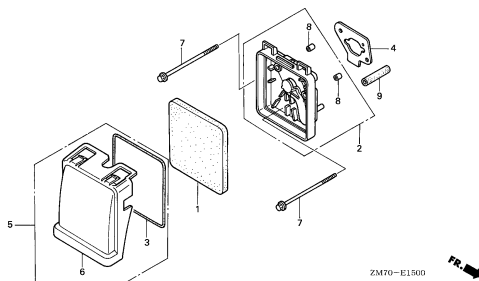
# ENGINE GROUP

**B11**

**E-15**

**C13**

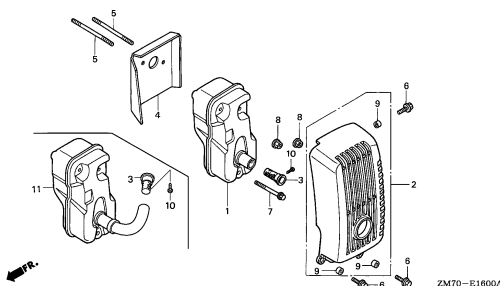
AIR CLEANER



**E-16**

**C14**

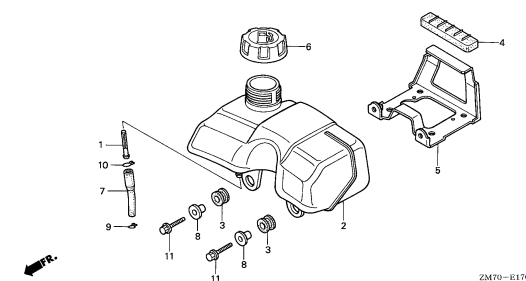
MUFFLER



**E-17**

**C16**

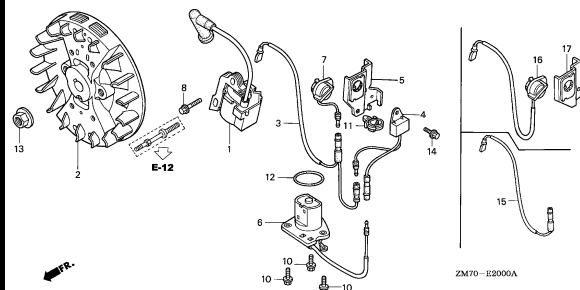
FUEL TANK



**E-20**

**D 2**

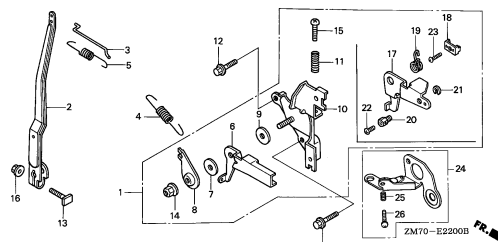
FLYWHEEL/IGNITION COIL



**E-22**

**D 3**

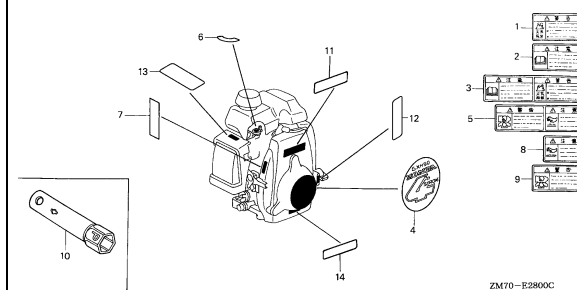
CONTROL



**E-28**

**D 5**

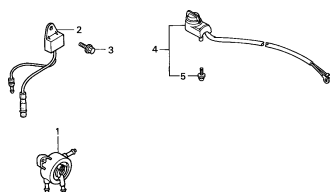
LABELS



**E-40**

**D 7**

OTHER PARTS

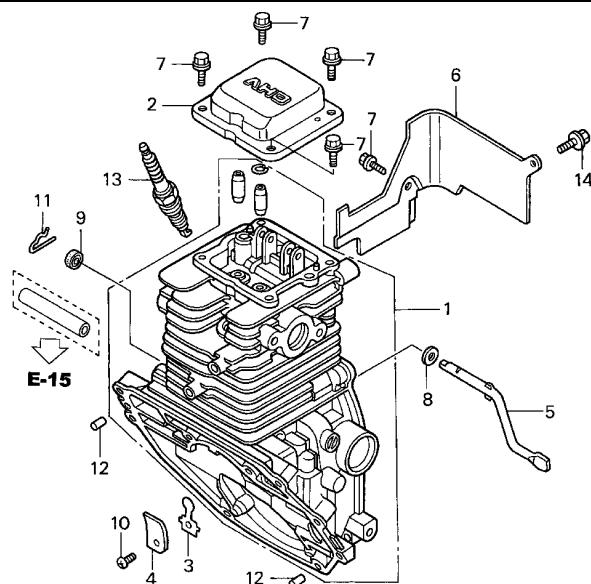


**2**

## E-3

## CYLINDER BARREL

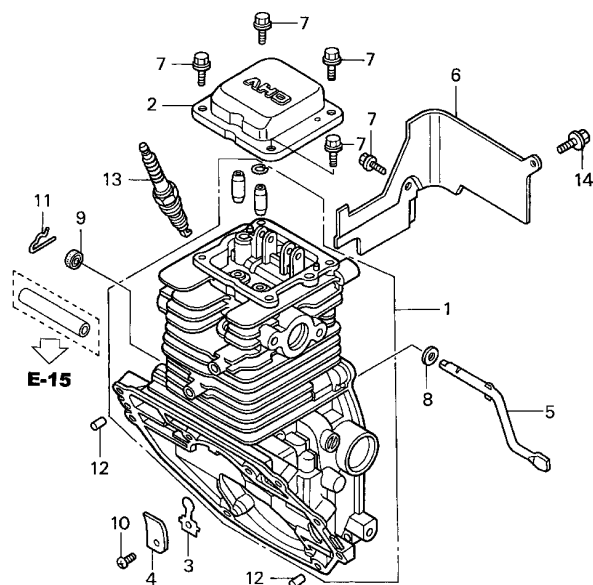
C 1



Service item

F.R.T.

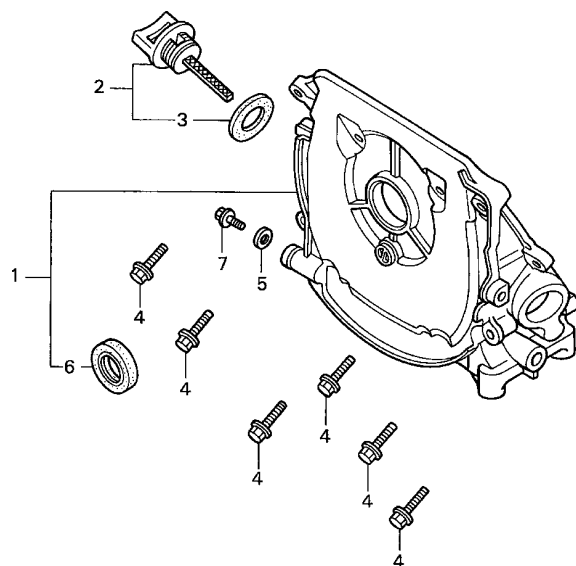
Ref. No.	Part No.	Description	Reqd. QTY	Serial No.	Parts catalogue code
			GXH 50		
1	12100-ZM7-000	BARREL COMP., CYLINDER .....	1	-----	QC,QHA,QHE,QU,QXA,SD,SE,SJ,SJK,SPB,SXA
	12100-ZM7-407	.....	1	1374067	QC/A,QHA/A,QHE/A,QHM,QU/A,QXA/A,SD/A,SE/A,SJ/A,SJK/A,SPB/A,SPB4,SXA/A
	12100-ZM7-417	.....	1	-----	QC/B,QEB2,QEB2/A,QEB4,QEB4/A,QHA/B,QHE/B,QHM/A,QU/B,QXA/B,SD/B,SE/B,SJ/B,SJK/B,SPB/B,SPB4/A,SXA/B
2	12311-ZM7-000	COVER, HEAD .....	1	1374068	QC/A,QHA/A,QHE/A,QHM,QU/A,QXA/A,SD/A,SE/A,SJ/A,SJK/A,SPB/A,SPB4,SXA/A
	12311-ZM7-010	.....	1	-----	QC,QHA,QHE,QU,QXA,SD,SE,SJ,SJK,SPB,SXA
					QC/A,QC/B,QEB2,QEB2/A,QEB4,QEB4/A,QHA/A,QHA/B,QHE/A,QHE/B,QHM,QHM/A,QU/A,QU/B,QXA/A,QXA/B,SD/A,SD/B,SE/A,SE/B,SJ/A,SJ/B,SJK/A,SJK/B,SPB/A,SPB/B,SPB4/A,SXA/A,SXA/B
3	15571-ZM7-003	VALVE, OIL OUTLET .....	1		
4	15572-ZM7-000	PLATE, STOPPER .....	1		
5	16541-ZM7-000	SHAFT, GOVERNOR ARM .....	1		
6	19631-ZM7-000	SHROUD .....	1		
7	90003-892-000	BOLT, FLANGE, 5X12 .....	5		
8	90443-ZC3-000	WASHER, 5.2X9 .....	1		
9	91231-ZC3-003	OIL SEAL, 5X11X5 .....	1		
10	93500-03005-0A	SCREW, PAN, 3X5 .....	1		
11	94251-06000	PIN, LOCK, 6MM .....	1		
12	96220-60150	ROLLER, 6X15 .....	2		
13	98056-54750	PLUG, SPARK (U14FS-UB) (DENSO) .....	(1)	-----	SD,SD/A,SD/B,SJ,SJ/A,SJ/B,SJK,SJK/A,SJK/B
	98056-54757	PLUG, SPARK (U14FSR-UB) .....	(1)	-----	QEB2,QEB2/A,QEB4,QEB4/A
			(1)	-----	QC,QC/A,QC/B,QHA,QHA/A,QHA/B,QHE,QHE/A,QHE/B,QHM,QHM/A,QU,QU/A,QU/B,QXA,QXA/A,QXA/B,SD,SD/A,SD/B,SE,SE/A,SE/B,SPB,SPB/A,SPB/B,SPB4,SPB4/A,SXA,SXA/A,SXA/B
	98056-54770	PLUG, SPARK (C4HSB) (NGK) .....	(1)	-----	SD,SD/A,SD/B,SJ,SJ/A,SJ/B,SJK,SJK/A,SJK/B



ZM70-E0300A

Ref. No.	Part No.	Description	Reqd. QTY	Serial No.	Parts catalogue code
			GXH 50		
13)	98056-54777	PLUG, SPARK (CR4HSB) .....	1	-----	QEB2,QEB2/A,QEB4,QEB4/A
			(1)	-----	QC,QC/A,QC/B,QHA,QHA/A,QHA/B,QHE,QHE/A,QHE/B,QHM,QHM/A,QU,QU/A,QU/B,QXA QXA/A,QXA/B,SD,SD/A,SD/B,SE,SE/A,SE/B,SPB,SPB/A,SPB/B,SPB4,SPB4/A,SXA SXA/A,SXA/B
	98056-55750	PLUG, SPARK (U16FS-UB) .....	1	-----	SD,SD/A,SD/B,SJ,SJ/A,SJ/B,SJK,SJK/A,SJK/B
	98056-55757	PLUG, SPARK (U16FSR-UB) .....	1	-----	QC,QC/A,QC/B,QHA,QHA/A,QHA/B,QHE,QHE/A,QHE/B,QHM,QHM/A,QU,QU/A,QU/B,QXA QXA/A,QXA/B,SE,SE/A,SE/B,SPB,SPB/A,SPB/B,SPB4,SPB4/A,SXA,SXA/A,SXA/B
	98056-55770	PLUG, SPARK (C5HSB) .....	1	-----	SD,SD/A,SD/B,SJ,SJ/A,SJ/B,SJK,SJK/A,SJK/B
	98056-55777	PLUG, SPARK (CR5HSB) .....	1	-----	QC,QC/A,QC/B,QHA,QHA/A,QHA/B,QHE,QHE/A,QHE/B,QHM,QHM/A,QU,QU/A,QU/B,QXA QXA/A,QXA/B,SE,SE/A,SE/B,SPB,SPB/A,SPB/B,SPB4,SPB4/A,SXA,SXA/A,SXA/B
14	90003-892-000	BOLT, FLANGE, 5X12 .....	1		





ZM70-E0310

Service item

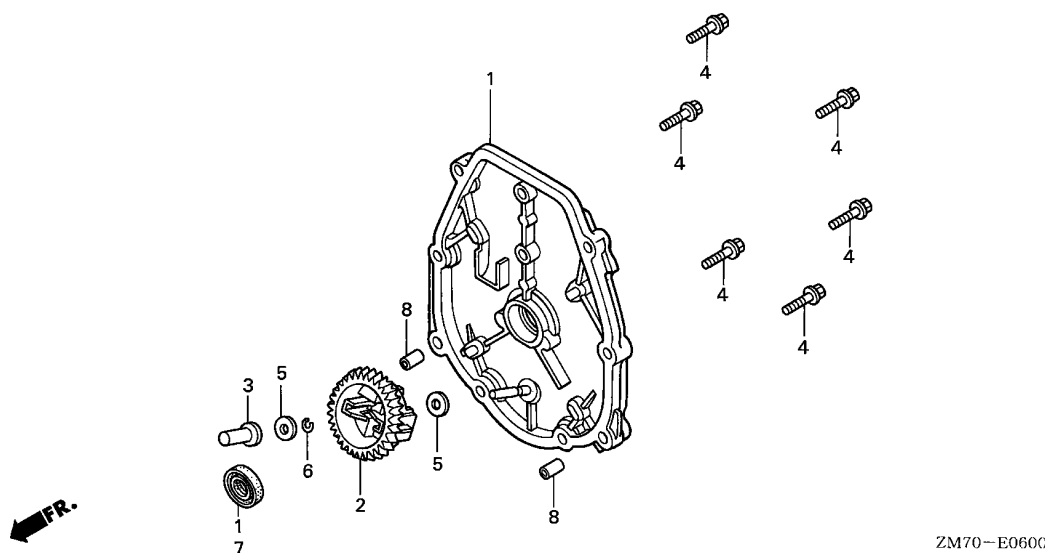
F.R.T.

Ref. No.	Part No.	Description	Reqd. QTY	Serial No.	Parts catalogue code
			GXH 50		
1	11300-ZM7-000	CASE ASSY., OIL .....	1	-----	QC,QEB2,QEB4,QU,SD,SE,SJ,SJK,SPB
	11300-ZM7-800	.....	1	-----	QHA,QHE,QXA,SXA
	11300-ZM7-406	.....	1	-----	QC/A,QC/B,QEB2/A,QEB4/A,QU/A,QU/B,SD/A,SD/B,SE/A,SE/B,SJ/A,SJ/B,SJK/A
	11300-ZM7-407	.....	1	-----	SJK/B,SPB/A,SPB/B,SPB4,SPB4/A
				-----	QHA/A,QHA/B,QHE/A,QHE/B,QHM,QHM/A,QXA/A,QXA/B,SXA/A,SXA/B
2	15600-ZM7-003	CAP ASSY., OIL FILLER .....	1		
3	15625-ZE1-003	PACKING, OIL FILLER CAP .....	1		
4	90006-ZM7-000	BOLT, FLANGE, 5X23 .....	8		
5	90471-580-000	PACKING, 8MM .....	1		
6	91202-HC5-003	OIL SEAL, 17X27X5(ARAI) .....	1		
7	95701-08012-08	BOLT, FLANGE, 8X12 .....	1		

E-6

## CRANKCASE COVER

C 4

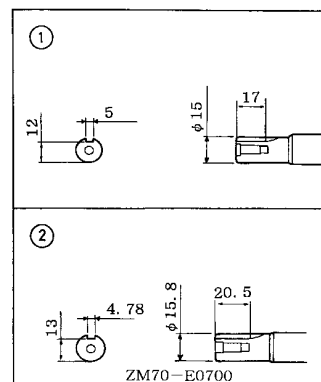
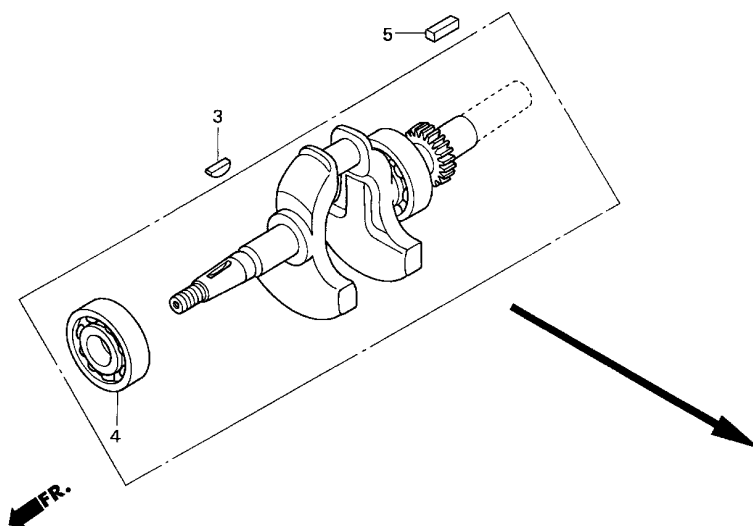


Service item

F.R.T.

Ref. No.	Part No.	Description	Reqd. QTY	Serial No.	Parts catalogue code
			GXH 50		
1	11340-ZM7-010	COVER COMP., CRANKCASE SIDE	1	-----	1199157 SD,SE,SJ,SPB,SXA
	11340-ZM7-020	.....	1	-----	SD/A,SD/B,SE/A,SE/B,SJ/A,SJ/B,SJK,SJK/A,SJK/B,SPB/A,SPB/B,SPB4,SPB4/A
					SXA/A,SXA/B
	11340-ZM7-801	.....	1	1199158	SD,SE,SJ,SPB,SXA
	11340-ZM7-802	.....	1	-----	1199157 QC,QHA,QHE,QU,QXA
			1	-----	QC/A,QC/B,QHA/A,QHA/B,QHE/A,QHE/B,QHM,QHM/A,QU/A,QU/B,QXA/A,QXA/B
	11340-ZM7-V30	.....	1	1199158	QC,QHA,QHE,QU,QXA
			1	-----	QEB2,QEB2/A,QEB4,QEB4/A
2	16510-ZM7-000	GOVERNOR ASSY.	1		
3	16531-ZM7-000	SLIDER, GOVERNOR	1		
4	90006-ZM7-000	BOLT, FLANGE, 5X23	6		
5	90441-ZM7-000	WASHER, 4.2X13	2		
6	90602-ZM7-000	CLIP, GOVERNOR HOLDER	1		
7	91202-HC5-003	OIL SEAL, 17X27X5(ARAI)	1		
8	94301-06100	DOWEL PIN, 6X10	2		

2



Service item

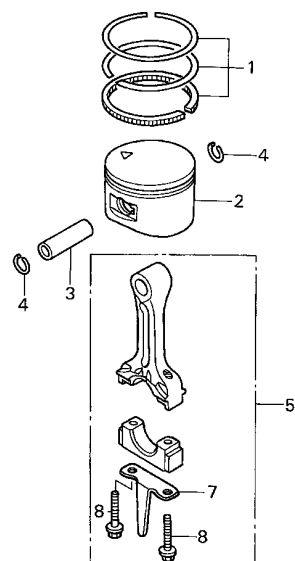
F.R.T.

Ref. No.	Part No.	Description	Reqd. QTY	Serial No.	Parts catalogue code
			GXH 50		
1	13310-ZM7-000	CRANKSHAFT COMP. ....	1	-----	SD,SD/A,SD/B,SE,SE/A,SE/B,SJ,SJ/A,SJ/B,SJK,SJK/A,SJK/B,SPB,SPB/A,SPB/B SPB4,SPB4/A,SXA,SXA/A,SXA/B
2	13310-ZM7-800	CRANKSHAFT COMP. ....	1	-----	QC,QC/A,QC/B,QHA,QHA/A,QHA/B,QHE,QHE/A,QHE/B,QHM,QHM/A,QU,QU/A,QU/B,QXA QXA/A,QXA/B
	13310-ZM7-V30	.....	1	-----	QEB2,QEB2/A,QEB4,QEB4/A
3	13331-ZM7-000	KEY, SPECIAL .....	1	-----	
4	96100-62030-00	BEARING, RADIAL BALL, 6203 ..	1	-----	
5	90741-ZM7-000	KEY, 4.78MM .....	(1)	-----	QC,QC/A,QC/B,QEB2,QEB4,QHA,QHA/A,QHA/B,QHE,QHE/A,QHE/B,QHM,QHM/A,QU,QU/A QU/B,QXA,QXA/A,QXA/B
	90741-959-000	KEY, 5MM .....	(1)	-----	QEB2/A,QEB4/A,SD,SD/A,SD/B,SE,SE/A,SE/B,SJ,SJ/A,SJ/B,SJK,SJK/A,SJK/B,SPB SPB/A,SPB/B,SPB4,SPB4/A,SXA,SXA/A,SXA/B

## E-8

## PISTON/CONNECTING ROD

C 6



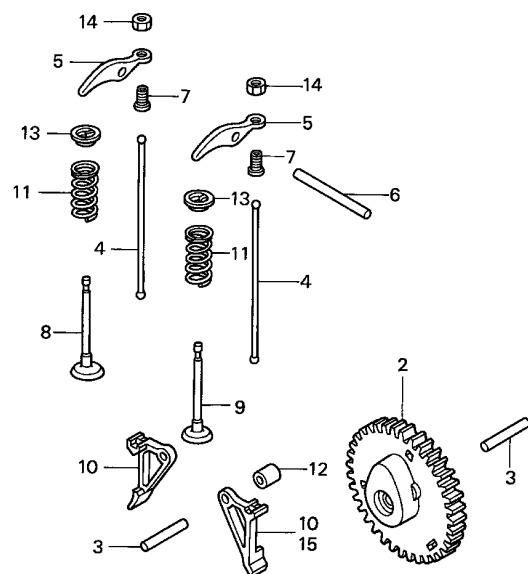
ZM70-E0800

Service item

F.R.T.

Ref. No.	Part No.	Description	Reqd. QTY	Serial No.	Parts catalogue code
			GXH 50		
1	13010-ZM7-000	RING SET, PISTON (STD.) .....	1		
2	13101-ZM7-000	PISTON (STD.) .....	1	1209631	QC,QHA,QHE,QU,QXA,SD,SE,SJ,SPB,SXA
	13101-ZM7-010	.....	1		QC/A,QC/B,QEB2,QEB2/A,QEB4,QEB4/A,QHA/A,QHA/B,QHE/A,QHE/B,QHM,QHM/A,QU/A,QU/B,QXA/A,QXA/B,SD/A,SD/B,SE/A,SE/B,SJ/A,SJ/B,SJK,SJK/A,SJK/B,SPB/A,SPB/B,SPB4,SPB4/A,SXA/A,SXA/B
3	13111-122-000	PIN, PISTON, 10X33 .....	1	1209632	QC,QHA,QHE,QU,QXA,SD,SE,SJ,SPB,SXA
4	13115-147-000	CLIP, PISTON PIN, 10MM .....	2		
5	13200-ZM7-000	ROD ASSY., CONNECTING .....	1		QC,QC/A,QC/B,QHA,QHA/A,QHA/B,QHE,QHE/A,QHE/B,QHM,QHM/A,QU,QU/A,QU/B,QXA/QXA/A,QXA/B,SD,SD/A,SD/B,SE,SE/A,SE/B,SJ,SJ/A,SJ/B,SJK,SJK/A,SJK/B,SPB/SPB/A,SPB/B,SPB4,SPB4/A,SXA,SXA/A,SXA/B
	13200-ZM7-V30	.....	1	1387261	QEB2,QEB4
			1		QEB2/A,QEB4/A
			1	1387262	QEB2,QEB4
7	13281-ZM7-000	DIPPER, CONNECTING ROD .....	1		QC,QC/A,QC/B,QHA,QHA/A,QHA/B,QHE,QHE/A,QHE/B,QHM,QHM/A,QU,QU/A,QU/B,QXA/QXA/A,QXA/B,SD,SD/A,SD/B,SE,SE/A,SE/B,SJ,SJ/A,SJ/B,SJK,SJK/A,SJK/B,SPB/SPB/A,SPB/B,SPB4,SPB4/A,SXA,SXA/A,SXA/B
	13281-ZM7-V30	.....	1	1387261	QEB2,QEB4
			1		QEB2/A,QEB4/A
			1	1387262	QEB2,QEB4
8	90001-ZM7-000	BOLT, CONNECTING ROD .....	2		

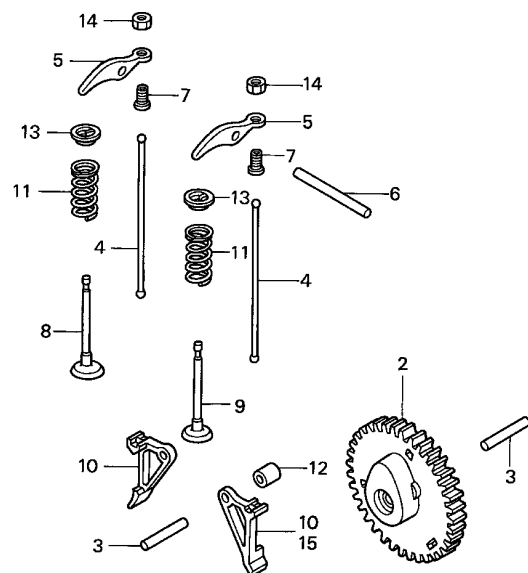
2



Service item

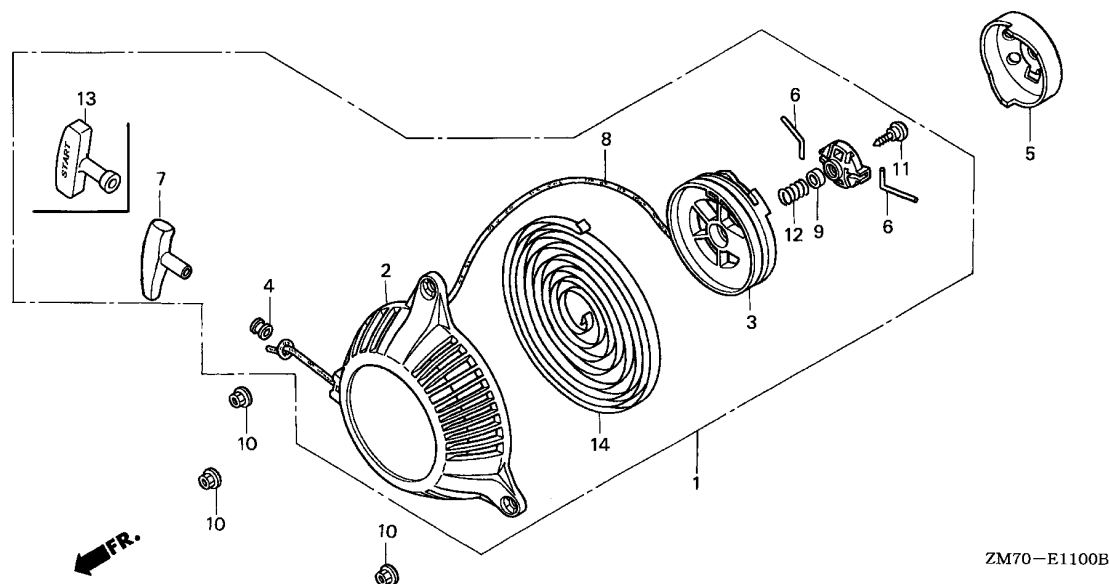
F.R.T.

Ref. No.	Part No.	Description	Reqd. QTY	Serial No.	Parts catalogue code
			GXH 50		
2	14100-ZM7-000	CAMSHAFT ASSY. ....	1	-----	1023740 QC,QU,QXA,SD,SE,SJ,SXA
	14100-ZM7-010	.....	1	-----	QC/A,QC/B,QHA,QHA/A,QHA/B,QHE,QHE/A,QHE/B,QHM,QHM/A,QU/A,QU/B,QXA/A,QXA/B,SD/A,SD/B,SE/A,SE/B,SJ/A,SJ/B,SJK,SJK/A,SJK/B,SPB,SPB/A,SPB/B,SPB4,SPB4/A,SXA/A,SXA/B
	14100-Z0G-000	.....	1	1023741	----- QC,QU,QXA,SD,SE,SJ,SXA
3	90702-P6R-008	PIN, OIL PUMP .....	2	-----	1199157 QEB2,QEB2/A,QEB4,QEB4/A
	14126-Z0G-003	ROLLER (5X29.8) .....	2	-----	QC,QHA,QHE,QU,QXA,SD,SE,SJ,SPB,SXA
					QC/A,QC/B,QEB2,QEB2/A,QEB4,QEB4/A,QHA/A,QHA/B,QHE/A,QHE/B,QHM,QHM/A,QU/A,QU/B,QXA/A,QXA/B,SD/A,SD/B,SE/A,SE/B,SJ/A,SJ/B,SJK,SJK/A,SJK/B,SPB/A,SPB/B,SPB4,SPB4/A,SXA/A,SXA/B
4	14410-ZM7-000	ROD, PUSH .....	2	1199158	----- QC,QHA,QHE,QU,QXA,SD,SE,SJ,SPB,SXA
5	14431-ZM7-000	ARM, VALVE ROCKER .....	2		
6	14435-ZM7-003	ROLLER (4X37.8) .....	1		
7	14451-ZM7-000	PIVOT, ROCKER ARM .....	2		
8	14711-ZM7-000	VALVE, IN. ....	1		
9	14721-ZM7-000	VALVE, EX. ....	1		
10	14731-ZM7-003	LIFTER, VALVE .....	2	-----	1029411 QC,QU,QXA,SD,SE,SJ,SXA
	14731-ZM7-013	.....	1	-----	QEB2,QEB2/A,QEB4,QEB4/A
			2	-----	QC/A,QC/B,QHA,QHA/A,QHA/B,QHE,QHE/A,QHE/B,QHM,QHM/A,QU/A,QU/B,QXA/A,QXA/B,SD/A,SD/B,SE/A,SE/B,SJ/A,SJ/B,SJK,SJK/A,SJK/B,SPB,SPB/A,SPB/B,SPB4,SPB4/A,SXA/A,SXA/B
			2	1029412	----- QC,QU,QXA,SD,SE,SJ,SXA
11	14751-ZM7-000	SPRING, VALVE .....	2		
12	14754-ZM7-000	COLLAR, LIFTER .....	1		
13	14771-ZM3-000	RETAINER, VALVE SPRING .....	2	-----	1017842 QC,QU,QXA,SD,SE,SJ,SXA



ZM70-E0900A

Ref. No.	Part No.	Description	Reqd. QTY	Serial No.	Parts catalogue code
			GXH 50		
13)	14771-ZM3-010	RETAINER, VALVE SPRING .....	2	-----	QC/A, QC/B, QEB2, QEB2/A, QEB4, QEB4/A, QHA, QHA/A, QHA/B, QHE, QHE/A, QHE/B, QHM, QHM/A, QU/A, QU/B, QXA/A, QXA/B, SD/A, SD/B, SE/A, SE/B, SJ/A, SJ/B, SJK, SJK/A, SJK/B, SPB, SPB/A, SPB/B, SPB4, SPB4/A, SXA/A, SXA/B
14	90206-KM3-000	NUT, TAPPET ADJUSTING .....	2	1017843	QC, QU, QXA, SD, SE, SJ, SXA
15	14732-Z0G-003	LIFTER, EX. VALVE .....	1	-----	QEB2, QEB2/A, QEB4, QEB4/A



Service item

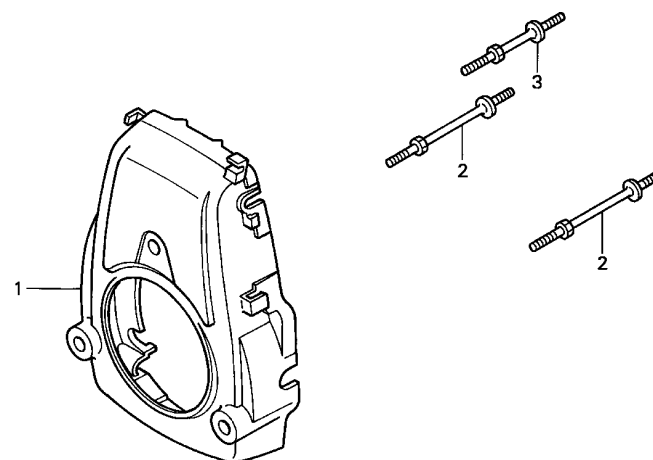
F.R.T.

Ref. No.	Part No.	Description	Reqd. QTY GXH 50	Serial No.	Parts catalogue code
1	28400-ZM7-003	STARTER ASSY., RECOIL .....	1	-----	QC, QC/A, QC/B, QHA, QHA/A, QHA/B, QHE, QHE/A, QHE/B, QHM, QHM/A, QU, QU/A, QU/B, QXA, QXA/A, QXA/B, SD, SD/A, SD/B, SE, SE/A, SE/B, SJ, SJ/A, SJ/B, SJK, SJK/A, SJK/B, SPB, SPB/A, SPB/B, SPB4, SPB4/A, SXA, SXA/A, SXA/B
	28400-ZM7-V31	.....	1	-----	QEB2, QEB2/A, QEB4, QEB4/A
2	28414-ZM7-003	CASE, RECOIL STARTER .....	1	-----	QC, QC/A, QC/B, QHA, QHA/A, QHA/B, QHE, QHE/A, QHE/B, QHM, QHM/A, QU, QU/A, QU/B, QXA, QXA/A, QXA/B, SD, SD/A, SD/B, SE, SE/A, SE/B, SJ, SJ/A, SJ/B, SJK, SJK/A, SJK/B, SPB, SPB/A, SPB/B, SPB4, SPB4/A, SXA, SXA/A, SXA/B
	28410-ZM7-V31	CASE COMP., STARTER .....	1	-----	QEB2, QEB2/A, QEB4, QEB4/A
3	28421-ZM7-003	REEL, RECOIL STARTER .....	1	-----	
4	28433-ZM3-003	GUIDE, ROPE .....	1	-----	QC, QC/A, QC/B, QHA, QHA/A, QHA/B, QHE, QHE/A, QHE/B, QHM, QHM/A, QU, QU/A, QU/B, QXA, QXA/A, QXA/B, SD, SD/A, SD/B, SE, SE/A, SE/B, SJ, SJ/A, SJ/B, SJK, SJK/A, SJK/B, SPB, SPB/A, SPB/B, SPB4, SPB4/A, SXA, SXA/A, SXA/B
5	28451-ZM7-003	PULLEY, RECOIL STARTER .....	1	-----	
6	28459-ZM7-003	ARM, SWING .....	2	-----	
7	28461-ZM3-003	KNOB, RECOIL STARTER .....	1	-----	QC, QC/A, QC/B, QHA, QHA/A, QHA/B, QHE, QHE/A, QHE/B, QHM, QHM/A, QU, QU/A, QU/B, QXA, QXA/A, QXA/B, SD, SD/A, SD/B, SE, SE/A, SE/B, SJ, SJ/A, SJ/B, SJK, SJK/A, SJK/B, SPB, SPB/A, SPB/B, SPB4, SPB4/A, SXA, SXA/A, SXA/B
	28462-ZM7-003	ROPE, RECOIL STARTER .....	1	-----	QC, QC/A, QC/B, QHA, QHA/A, QHA/B, QHE, QHE/A, QHE/B, QHM, QHM/A, QU, QU/A, QU/B, QXA, QXA/A, QXA/B, SD, SD/A, SD/B, SE, SE/A, SE/B, SJ, SJ/A, SJ/B, SJK, SJK/A, SJK/B, SPB, SPB/A, SPB/B, SPB4, SPB4/A, SXA, SXA/A, SXA/B
	28462-Z06-003	.....	1	-----	QEB2, QEB2/A, QEB4, QEB4/A
9	91504-ZM7-003	COLLAR .....	1	-----	
10	94050-05000	NUT, FLANGE, 5MM .....	3	-----	
11	90012-ZM3-003	SCREW, SETTING .....	1	-----	
12	28404-968-004	SPRING, FRICTION .....	1	-----	
13	28461-ZH8-003	GRIP, STARTER .....	1	-----	QEB2, QEB2/A, QEB4, QEB4/A
14	28442-ZL8-003	SPRING, RECOIL STARTER .....	1	-----	

E-12

## FAN COVER

C10



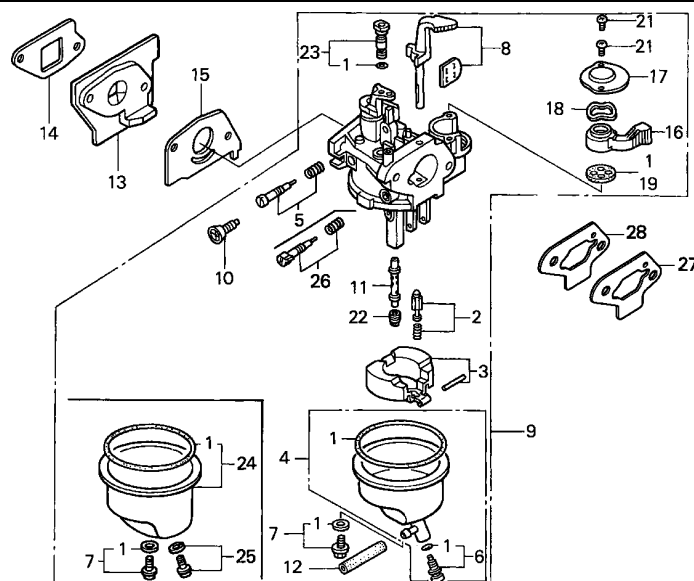
Service item

F.R.T.

Ref. No.	Part No.	Description	Reqd. QTY	Serial No.	Parts catalogue code
			GXH 50		
1	19610-ZM7-000ZA	COVER COMP., FAN	1	-----	QC,QHA,QHE,QU,QXA,SD,SE,SJ,SJK,SPB,SXA
		*R8*.....BRIGHT RED	1	-----	1344772 QC/A,QHA/A,QHE/A,QU/A,QXA/A,SD/A,SE/A,SJ/A,SJK/A,SPB/A,SXA/A
	19610-ZM7-000ZD	*NH1*.....BLACK	1	-----	SPB4,SPB4/A
	19610-ZM7-000ZC	*R280*.....POWER RED	1	-----	QC/B,QEB2,QEB2/A,QEB4,QEB4/A,QHA/B,QHE/B,QHM,QHM/A,QU/B,QXA/B,SD/B,SE/B
			1	1344773	SJ/B,SJK/B,SPB/B,SPB4,SPB4/A,SXA/B
2	90042-ZM7-000	BOLT, STUD (A)	2		QC/A,QHA/A,QHE/A,QU/A,QXA/A,SD/A,SE/A,SJ/A,SJK/A,SPB/A,SXA/A
3	90043-ZM7-000	BOLT, STUD (B)	1		

2





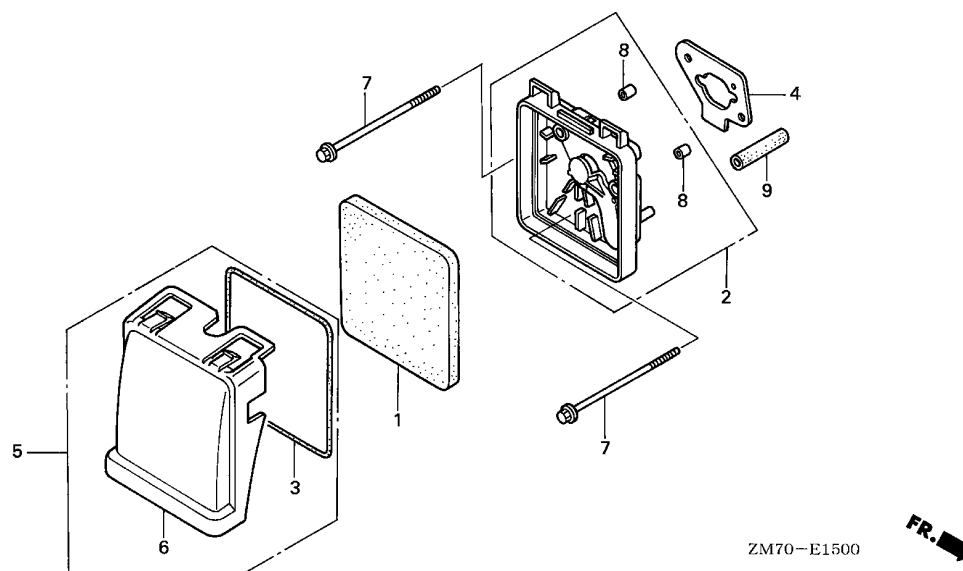
ZM70-E1400A

Service item

F.R.T.

Ref. No.	Part No.	Description	Reqd. QTY	Serial No.	Parts catalogue code
			GXH 50		
1	16010-ZG0-015	GASKET SET .....	1	-----	QC, QC/A, QC/B, QHA, QHA/A, QHA/B, QHE, QHE/A, QHE/B, QHM, QHM/A, QU, QU/A, QU/B, QXA, QXA/A, QXA/B, SD, SD/A, SD/B, SJ, SJ/A, SJ/B, SJK, SJK/A, SJK/B
	16010-ZM7-003	.....	1	-----	QEB2, QEB2/A, QEB4, QEB4/A, SE, SE/A, SE/B, SPB, SPB/A, SPB/B, SPB4, SPB4/A, SXA, SXA/A, SXA/B
2	16011-ZE0-005	VALVE SET, FLOAT .....	1	-----	
3	16013-ZG0-811	FLOAT SET .....	1	-----	
4	16015-ZM7-003	CHAMBER SET, FLOAT .....	1	-----	QEB2, QEB2/A, QEB4, QEB4/A, SE, SE/A, SE/B, SPB, SPB/A, SPB/B, SPB4, SPB4/A, SXA, SXA/A, SXA/B
5	16016-ZE0-005	SCREW SET, PILOT (CARBURETOR NO.) .....	1	-----	BF32A A SE
		..	1	-----	BF32D A QU, SD, SJ
6	16024-ZB9-005	SCREW SET, DRAIN .....	1	-----	QEB2, QEB2/A, QEB4, QEB4/A, SE, SE/A, SE/B, SPB, SPB/A, SPB/B, SPB4, SPB4/A, SXA, SXA/A, SXA/B
7	16028-ZG0-811	SCREW SET .....	1	-----	
8	16044-ZM7-003	CHOKE SET .....	1	-----	
9	16100-ZM7-G01	CARBURETOR ASSY. (BF32D A) ..	1	-----	1039488 QU, SD, SJ
	16100-ZM7-G11	CARBURETOR ASSY. (BF32E A) ..	1	-----	1068857 QC, QXA
			1	1039489	1068857 QU, SD, SJ
	16100-ZM7-G13	CARBURETOR ASSY. (BF32E C) ..	1	-----	QC/A, QC/B, QHA, QHA/A, QHA/B, QHE, QHE/A, QHE/B, QHM, QHM/A, QU/A, QU/B, QXA/A, QXA/B, SD/A, SD/B, SJ/A, SJ/B, SJK, SJK/A, SJK/B
			1	1068858	QC, QU, QXA, SD, SJ
	16100-ZM7-003	CARBURETOR ASSY. (BF32A A) ..	1	-----	1039300 SE
	16100-ZM7-801	CARBURETOR ASSY. (BF32C A) ..	1	-----	1068857 SXA
			1	1039301	1068857 SE
	16100-ZM7-803	CARBURETOR ASSY. (BF32C B) ..	1	-----	SE/A, SE/B, SPB, SPB/A, SPB/B, SPB4, SPB4/A, SXA/A, SXA/B
			1	1068858	SE, SXA
	16100-ZM7-V31	CARBURETOR ASSY. (BF32G A) ..	1	-----	QEB2, QEB2/A, QEB4, QEB4/A
10	16124-ZE0-005	SCREW, THROTTLE STOP .....	1	-----	

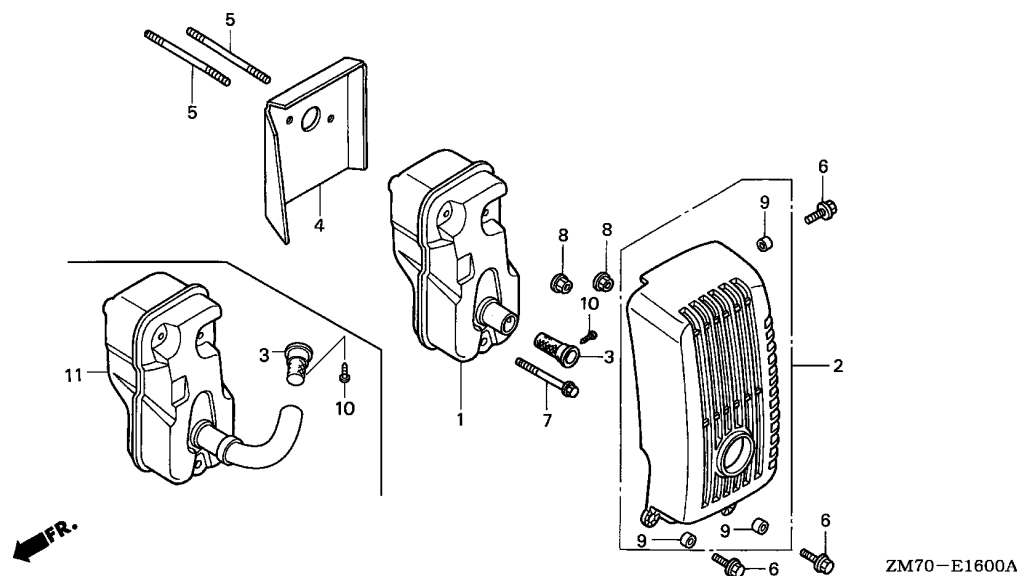
Ref. No.	Part No.	Description	Reqd. QTY GXH 50	Serial No.	Parts catalogue code
11	16166-ZM7-003	NOZZLE, MAIN .....	1		
12	16199-ZM7-003	TUBE .....	1	-----	SE,SE/A,SE/B,SPB,SPB/A,SPB/B,SPB4,SPB4/A,SXA,SXA/A,SXA/B
	95003-05010-31	TUBE, VINYL, 3.5X6.5X100 (95003-05001-60M)	1	-----	QEB2,QEB2/A,QEB4,QEB4/A
13	16211-ZM7-000	INSULATOR, CARBURETOR .....	1		
14	16212-ZM7-000	PACKING, INSULATOR .....	1		
15	16221-ZG0-801	PACKING, CARBURETOR .....	1		
16	16953-ZG0-812	LEVER, COCK .....	1		
17	16954-ZE1-812	PLATE, LEVER SETTING .....	1		
18	16956-ZE1-811	SPRING, COCK LEVER .....	1		
19	16957-ZE1-812	PACKING, FUEL COCK .....	1		
21	93500-03006-1H	SCREW, PAN, 3X6 .....	2		
22	99101-ZG0-0480	JET, MAIN, #48 .....	(1)	-----	QEB2,QEB2/A,QEB4,QEB4/A
	99101-ZG0-0500	JET, MAIN, #50 .....	(1)		
	99101-ZG0-0520	JET, MAIN, #52 .....	1	-----	QC/B,QEB2,QEB2/A,QEB4,QEB4/A,QHA/B,QHE/B,QHM/A,QU/B,QXA/B,SD/B,SE/B,SJ/B SJK/B,SPB/B,SPB4/A,SXA/B
			(1)	-----	QC,QC/A,QHA,QHA/A,QHE,QHE/A,QHM,QU,QU/A,QXA,QXA/A,SD,SD/A,SE,SE/A,SJ,SJ/A SJK,SJK/A,SPB,SPB/A,SPB4,SXA,SXA/A
	99101-ZG0-0550	JET, MAIN, #55 .....	1	-----	QC,QC/A,QC/B,QHA,QHA/A,QHA/B,QHE,QHE/A,QHE/B,QHM,QHM/A,QU,QU/A,QU/B,QXA QXA/A,QXA/B,SD,SD/A,SD/B,SE,SE/A,SE/B,SJ,SJ/A,SJ/B,SJK,SJK/A,SJK/B,SPB SPB/A,SPB/B,SPB4,SPB4/A,SXA,SXA/A,SXA/B
23	99204-ZE2-0350	JET SET, PILOT, #35 .....	1		
24	16015-ZG0-811	CHAMBER SET, FLOAT .....	1	-----	QC,QC/A,QC/B,QHA,QHA/A,QHA/B,QHE,QHE/A,QHE/B,QHM,QHM/A,QU,QU/A,QU/B,QXA QXA/A,QXA/B,SD,SD/A,SD/B,SJ,SJ/A,SJ/B,SJK,SJK/A,SJK/B
25	16024-ZE1-811	SCREW SET, DRAIN .....	1	-----	QC,QC/A,QC/B,QHA,QHA/A,QHA/B,QHE,QHE/A,QHE/B,QHM,QHM/A,QU,QU/A,QU/B,QXA QXA/A,QXA/B,SD,SD/A,SD/B,SJ,SJ/A,SJ/B,SJK,SJK/A,SJK/B
26	16016-ZH7-W01	SCREW SET, PILOT .....	1	-----	QC,QC/A,QC/B,QEB2,QEB2/A,QEB4,QEB4/A,QHA,QHA/A,QHA/B,QHE,QHE/A,QHE/B,QHM QHM/A,QU/A,QU/B,QXA,QXA/A,QXA/B,SD/A,SD/B,SE/A,SE/B,SJ/A,SJ/B,SJK,SJK/A SJK/B,SPB,SPB/A,SPB/B,SPB4,SPB4/A,SXA,SXA/A,SXA/B
		(CARBURETOR NO.)	1	BF32C A	----- SE
			1	BF32E A	----- QU,SD,SJ
27	16220-ZM7-V30	SPÁČER, CARBURETOR .....	1	-----	QEB2,QEB2/A,QEB4,QEB4/A
28	17228-ZM7-000	PACKING, AIR CLEANER .....	1	-----	QEB2,QEB2/A,QEB4,QEB4/A



Service item

F.R.T.

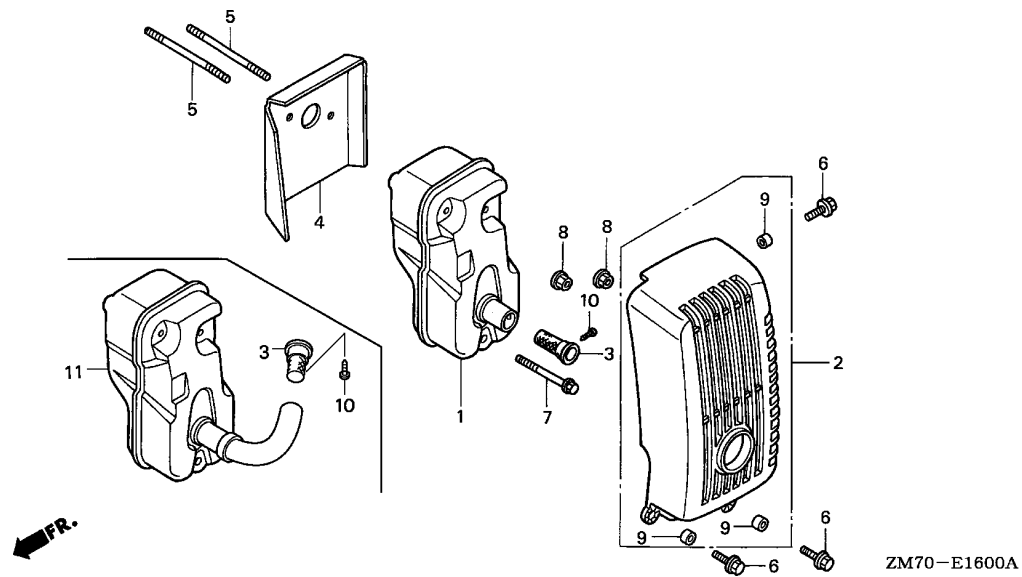
Ref. No.	Part No.	Description	Reqd. QTY	Serial No.	Parts catalogue code
			GXH 50		
1	17211-ZM7-000	ELEMENT, AIR CLEANER .....	1		
2	17220-ZM7-000	CASE COMP., AIR CLEANER .....	1		
3	17227-ZM7-000	SEAL, AIR CLEANER .....	1		
4	17228-ZM7-000	PACKING, AIR CLEANER .....	1	-----	QC, QC/A, QC/B, QHA, QHA/A, QHA/B, QHE, QHE/A, QHE/B, QHM, QHM/A, QU, QU/A, QU/B, QXA QXA/A, QXA/B, SD, SD/A, SD/B, SE, SE/A, SE/B, SJ, SJ/A, SJ/B, SJK, SJK/A, SJK/B, SPB SPB/A, SPB/B, SPB4, SPB4/A, SXA, SXA/A, SXA/B QEB2, QEB2/A, QEB4, QEB4/A
	17228-Z0G-000	.....	1	-----	
5	17230-ZM7-000	COVER COMP., AIR CLEANER ....	1		
6	17231-ZM7-000	COVER, AIR CLEANER .....	1		
7	90004-ZM7-000	BOLT, FLANGE, 5X75 .....	2	-----	QC, QC/A, QC/B, QHA, QHA/A, QHA/B, QHE, QHE/A, QHE/B, QHM, QHM/A, QU, QU/A, QU/B, QXA QXA/A, QXA/B, SD, SD/A, SD/B, SE, SE/A, SE/B, SJ, SJ/A, SJ/B, SJK, SJK/A, SJK/B, SPB SPB/A, SPB/B, SPB4, SPB4/A, SXA, SXA/A, SXA/B QEB2, QEB2/A, QEB4, QEB4/A
	90004-ZM7-V30	BOLT, FLANGE, 5X80 .....	2	-----	
8	91503-ZM7-000	COLLAR, AIR CLEANER .....	2		
9	95005-70075-30	TUBE, 7X75 (95005-70001-30M) -	1		



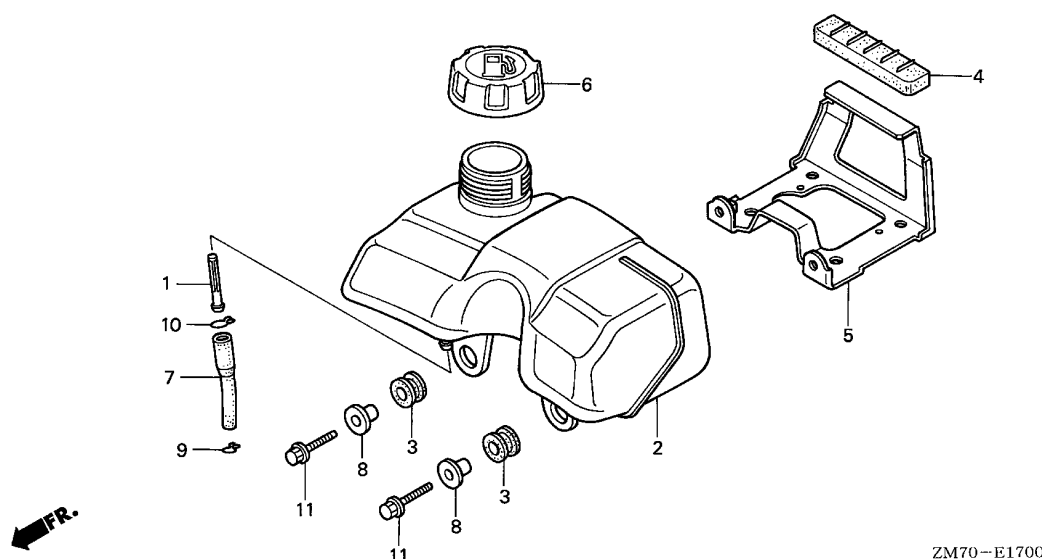
Service item

F.R.T.

Ref. No.	Part No.	Description	Reqd. QTY	Serial No.	Parts catalogue code
			GXH 50		
1	18310-ZM7-003	MUFFLER COMP. ....	1	-----	QC, QC/A, QC/B, QHA, QHA/A, QHA/B, QHE, QHE/A, QHE/B, QU, QU/A, QU/B, QXA, QXA/A, QXA/B, SD, SD/A, SD/B, SE, SE/A, SE/B, SJ, SJ/A, SJ/B, SJK, SJK/A, SJK/B, SPB, SPB/A, SPB/B, SXA, SXA/A, SXA/B
	18310-ZM7-801	.....	1 (1)	-----	QHM, QHM/A, SPB4, SPB4/A
2	18320-ZM7-000	PROTECTOR COMP., MUFFLER ....	1	-----	QC, QC/A, QC/B, QHA, QHA/A, QHA/B, QHE, QHE/A, QHE/B, QU, QU/A, QU/B, QXA, QXA/A, QXA/B, SD, SD/A, SD/B, SE, SE/A, SE/B, SJ, SJ/A, SJ/B, SJK, SJK/A, SJK/B, SPB, SPB/A, SPB/B, SPB4, SXA, SXA/A, SXA/B
3	18350-ZM7-801	ARRESTER COMP., SPARK .....	1 (1)	-----	QC, QC/A, QC/B, QEB2, QEB2/A, QHA, QHA/A, QHA/B, QHE, QHE/A, QHE/B, QU, QU/A, QU/B, QXA, QXA/A, QXA/B, SD, SD/A, SD/B, SE, SE/A, SE/B, SJ, SJ/A, SJ/B, SJK, SJK/A, SJK/B, SPB, SPB/A, SPB/B, SXA, SXA/A, SXA/B
4	18515-ZM7-000	GUIDE, AIR .....	1	-----	QC, QC/A, QC/B, QEB2, QEB2/A, QHA, QHA/A, QHA/B, QHE, QHE/A, QHE/B, QU, QU/A, QU/B, QXA, QXA/A, QXA/B, SD, SD/A, SD/B, SE, SE/A, SE/B, SJ, SJ/A, SJ/B, SJK, SJK/A, SJK/B, SPB, SPB/A, SPB/B, SPB4, SXA, SXA/A, SXA/B
5	90002-ZM7-000	BOLT, STUD, 2,5X55 .....	2	-----	QC, QC/A, QC/B, QEB2, QEB2/A, QHA, QHA/A, QHA/B, QHE, QHE/A, QHE/B, QU, QU/A, QU/B, QXA, QXA/A, QXA/B, SD, SD/A, SD/B, SE, SE/A, SE/B, SJ, SJ/A, SJ/B, SJK, SJK/A, SJK/B, SPB, SPB/A, SPB/B, SPB4, SXA, SXA/A, SXA/B
6	90012-892-000	BOLT, FLANGE, 5X16 .....	3	-----	QC, QC/A, QC/B, QEB2, QEB2/A, QHA, QHA/A, QHA/B, QHE, QHE/A, QHE/B, QU, QU/A, QU/B, QXA, QXA/A, QXA/B, SD, SD/A, SD/B, SE, SE/A, SE/B, SJ, SJ/A, SJ/B, SJK, SJK/A, SJK/B, SPB, SPB/A, SPB/B, SPB4, SXA, SXA/A, SXA/B
7	90103-P4V-010	BOLT, FLANGE, 5X35 .....	1	-----	QC, QC/A, QC/B, QEB2, QEB2/A, QHA, QHA/A, QHA/B, QHE, QHE/A, QHE/B, QU, QU/A, QU/B, QXA, QXA/A, QXA/B, SD, SD/A, SD/B, SE, SE/A, SE/B, SJ, SJ/A, SJ/B, SJK, SJK/A, SJK/B, SPB, SPB/A, SPB/B, SPB4, SXA, SXA/A, SXA/B
8	90136-SM4-901	NUT, SELF-LOCK, 5MM .....	2	-----	QC, QC/A, QC/B, QEB2, QEB2/A, QHA, QHA/A, QHA/B, QHE, QHE/A, QHE/B, QU, QU/A, QU/B, QXA, QXA/A, QXA/B, SD, SD/A, SD/B, SE, SE/A, SE/B, SJ, SJ/A, SJ/B, SJK, SJK/A, SJK/B, SPB, SPB/A, SPB/B, SPB4, SXA, SXA/A, SXA/B
9	91502-ZM3-000	COLLAR, TOP COVER .....	3	-----	QC, QC/A, QC/B, QEB2, QEB2/A, QHA, QHA/A, QHA/B, QHE, QHE/A, QHE/B, QU, QU/A, QU/B, QXA, QXA/A, QXA/B, SD, SD/A, SD/B, SE, SE/A, SE/B, SJ, SJ/A, SJ/B, SJK, SJK/A, SJK/B, SPB, SPB/A, SPB/B, SPB4, SXA, SXA/A, SXA/B
10	93903-24110	SCREW, TAPPING, 4X8 .....	1 (1)	-----	QC, QC/A, QC/B, QEB2, QEB2/A, QHA, QHA/A, QHA/B, QHE, QHE/A, QHE/B, QU, QU/A, QU/B, QXA, QXA/A, QXA/B, SD, SD/A, SD/B, SE, SE/A, SE/B, SJ, SJ/A, SJ/B, SJK, SJK/A, SJK/B, SPB, SPB/A, SPB/B, SXA, SXA/A, SXA/B



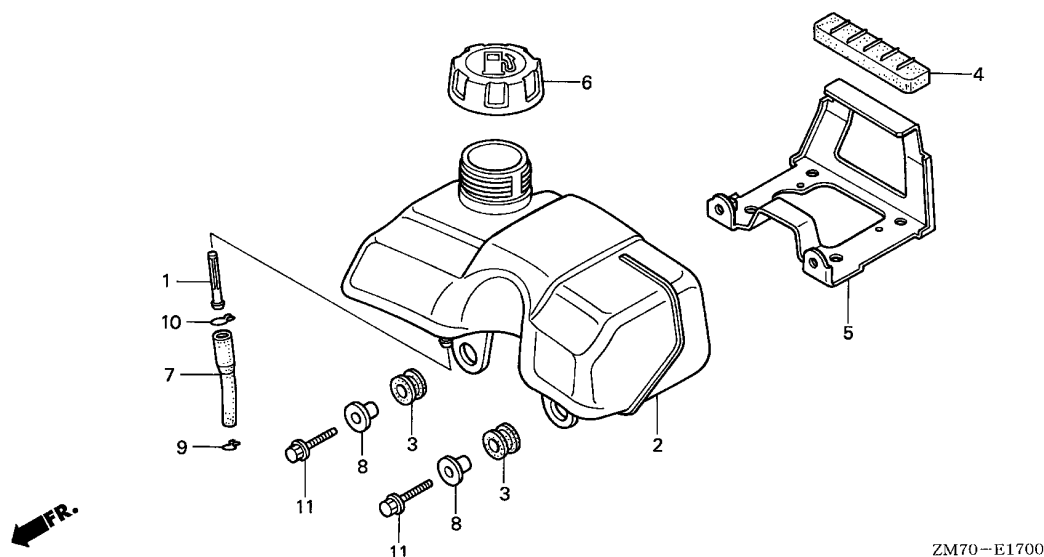
Ref. No.	Part No.	Description	Reqd. QTY GXH 50	Serial No.	Parts catalogue code
11	18310-ZM7-V31	MUFFLER COMP. ....	1	-----	QEB2,QEB2/A,QEB4,QEB4/A
	18310-ZM7-V41	.....	(1)	-----	QEB2,QEB2/A



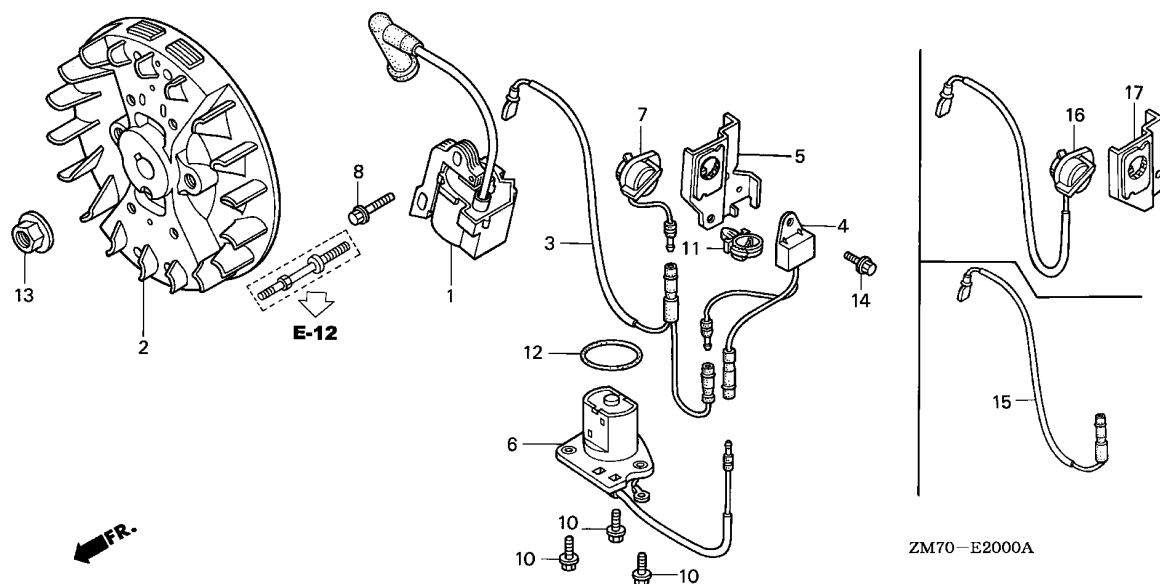
Service item

F.R.T.

Ref. No.	Part No.	Description	Reqd. QTY	Serial No.	Parts catalogue code
			GXH 50		
1	16952-ZE6-000	STRAINER, FUEL .....	1	-----	QC, QC/A, QC/B, QEB2, QEB2/A, QEB4, QEB4/A, QU, QU/A, QU/B, QXA, QXA/A, QXA/B, SD, SD/A, SD/B, SE, SE/A, SE/B, SJ, SJ/A, SJ/B, SJK, SJK/A, SJK/B, SPB, SPB/A, SPB/B, SPB4, SPB4/A, SXA, SXA/A, SXA/B
2	17511-ZM7-000	TANK, FUEL .....	1	-----	QC, QC/A, QC/B, QEB2, QEB2/A, QEB4, QEB4/A, QU, QU/A, QU/B, QXA, QXA/A, QXA/B, SD, SD/A, SD/B, SE, SE/A, SE/B, SJ, SJ/A, SJ/B, SJK, SJK/A, SJK/B, SPB, SPB/A, SPB/B, SPB4, SPB4/A, SXA, SXA/A, SXA/B
3	17532-ZM7-000	RUBBER A, TANK MOUNTING .....	2	-----	QC, QC/A, QC/B, QEB2, QEB2/A, QEB4, QEB4/A, QU, QU/A, QU/B, QXA, QXA/A, QXA/B, SD, SD/A, SD/B, SE, SE/A, SE/B, SJ, SJ/A, SJ/B, SJK, SJK/A, SJK/B, SPB, SPB/A, SPB/B, SPB4, SPB4/A, SXA, SXA/A, SXA/B
4	17533-ZM7-000	RUBBER B, TANK MOUNTING .....	1	-----	QC, QC/A, QC/B, QEB2, QEB2/A, QEB4, QEB4/A, QU, QU/A, QU/B, QXA, QXA/A, QXA/B, SD, SD/A, SD/B, SE, SE/A, SE/B, SJ, SJ/A, SJ/B, SJK, SJK/A, SJK/B, SPB, SPB/A, SPB/B, SPB4, SPB4/A, SXA, SXA/A, SXA/B
5	17560-ZM7-000	STAY COMP., FUEL TANK .....	1	-----	QC, QC/A, QC/B, QEB2, QEB2/A, QEB4, QEB4/A, QU, QU/A, QU/B, QXA, QXA/A, QXA/B, SD, SD/A, SD/B, SE, SE/A, SE/B, SJ, SJ/A, SJ/B, SJK, SJK/A, SJK/B, SPB, SPB/A, SPB/B, SPB4, SPB4/A, SXA, SXA/A, SXA/B
6	17620-ZL8-003 17620-ZL8-013	CAP ASSY., FUEL TANK .....	1	1159947	QC, QU, QXA, SD, SE, SJ, SPB, SXA QC/A, QC/B, QEB2, QEB2/A, QEB4, QEB4/A, QU/A, QU/B, QXA/A, QXA/B, SD/A, SD/B, SE/A, SE/B, SJ/A, SJ/B, SJK, SJK/A, SJK/B, SPB/A, SPB/B, SPB4, SPB4/A, SXA/A, SXA/B
7	17701-ZM7-000	TUBE A, FUEL .....	1	1159948	QC, QU, QXA, SD, SE, SJ, SPB, SXA QC, QC/A, QC/B, QEB2, QEB2/A, QEB4, QEB4/A, QU, QU/A, QU/B, QXA, QXA/A, QXA/B, SD, SD/A, SD/B, SE, SE/A, SE/B, SJ, SJ/A, SJ/B, SJK, SJK/A, SJK/B, SPB, SPB/A, SPB/B, SPB4, SPB4/A, SXA, SXA/A, SXA/B
8	19052-MB4-880	COLLAR, CANISTER MOUNTING ...	2	-----	QC, QC/A, QC/B, QEB2, QEB2/A, QEB4, QEB4/A, QU, QU/A, QU/B, QXA, QXA/A, QXA/B, SD, SD/A, SD/B, SE, SE/A, SE/B, SJ, SJ/A, SJ/B, SJK, SJK/A, SJK/B, SPB, SPB/A, SPB/B, SPB4, SPB4/A, SXA, SXA/A, SXA/B
9	95002-02080	CLIP, TUBE (B8) .....	1	-----	QC, QC/A, QC/B, QEB2, QEB2/A, QEB4, QEB4/A, QU, QU/A, QU/B, QXA, QXA/A, QXA/B, SD, SD/A, SD/B, SE, SE/A, SE/B, SJ, SJ/A, SJ/B, SJK, SJK/A, SJK/B, SPB, SPB/A, SPB/B, SPB4, SPB4/A, SXA, SXA/A, SXA/B



Ref. No.	Part No.	Description	Reqd. QTY	Serial No.	Parts catalogue code
			GXH 50		
10	95002-02120	CLIP, TUBE (B12) .....	1	-----	QC,QU,QXA,SD,SE,SJ,SJK,SPB,SXA
	95002-02100	CLIP, TUBE (B10) .....	1	-----	QC/A,QC/B,QEB2,QEB2/A,QEB4,QEB4/A,QU/A,QU/B,QXA/A,QXA/B,SD/A,SD/B,SE/A,SE/B,SJ/A,SJ/B,SJK/A,SJK/B,SPB/A,SPB/B,SPB4,SPB4/A,SXA/A,SXA/B
11	95701-06020-07	BOLT, FLANGE, 6X20 .....	2	-----	QC,QC/A,QC/B,QEB2,QEB2/A,QEB4,QEB4/A,QU,QU/A,QU/B,QXA,QXA/A,QXA/B,SD,SD/A,SD/B,SE,SE/A,SE/B,SJ,SJ/A,SJ/B,SJK,SJK/A,SJK/B,SPB,SPB/A,SPB/B,SPB4,SPB4/A,SXA,SXA/A,SXA/B



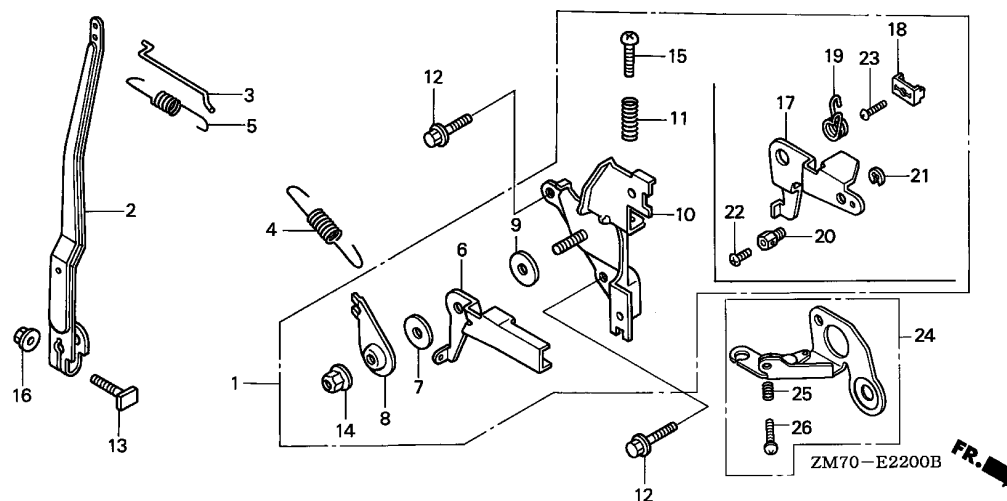
Service item

F.R.T.

ZM70-E2000A

Ref. No.	Part No.	Description	Reqd. QTY	Serial No.	Parts catalogue code
			GXH 50		
1	30500-ZM7-004	COIL ASSY., IGNITION .....	1		
2	31110-ZM7-004	FLYWHEEL COMP. ....	1		
3	32195-ZM7-800	CORD, STOP SWITCH .....	1	-----	QHA,QHA/A,QHA/B,QHE,QHE/A,QHE/B,QHM,QHM/A,QXA,QXA/A,QXA/B,SXA,SXA/A,SXA/B
4	34150-ZH7-003	ALERT UNIT, OIL .....	1	-----	QXA,QXA/A,QXA/B,SXA,SXA/A,SXA/B
5	35124-ZM7-800	BRACKET COMP., STOP SWITCH ..	1	-----	QXA,QXA/A,QXA/B,SXA,SXA/A,SXA/B
6	35480-ZM7-801	SWITCH ASSY., OIL LEVEL .....	1	-----	QHA,QHA/A,QHA/B,QHE,QHE/A,QHE/B,QHM,QHM/A,QXA,QXA/A,QXA/B,SXA,SXA/A,SXA/B
7	36100-ZE1-015	SWITCH ASSY., ENGINE STOP ...	1	-----	QXA,QXA/A,QXA/B,SXA,SXA/A,SXA/B
8	90004-ZC3-000	BOLT, FLANGE, 5X20 .....	1		
10	90012-896-750	BOLT, FLANGE, 5X14 .....	3	-----	QHA,QHA/A,QHA/B,QHE,QHE/A,QHE/B,QHM,QHM/A,QXA,QXA/A,QXA/B,SXA,SXA/A,SXA/B
11	90684-ZA0-601	CLIP, HARNESS .....	1	-----	QXA,QXA/A,QXA/B,SXA,SXA/A,SXA/B
12	91301-ZA8-003	O-RING, 34.6X2.5 .....	1	-----	QHA,QHE,QXA,SXA
	91301-ZM7-003	.....	1	-----	QHA/A,QHA/B,QHE/A,QHE/B,QHM,QHM/A,QXA/A,QXA/B,SXA/A,SXA/B
13	94050-10000	NUT, FLANGE, 10MM .....	1		
14	95701-06008-00	BOLT, FLANGE, 6X8 .....	1	-----	QXA,QXA/A,QXA/B,SXA,SXA/A,SXA/B
15	32195-ZN4-000	CORD, STOP SWITCH .....	1	-----	SPB,SPB/A,SPB/B,SPB4,SPB4/A
16	35120-ZM7-003	SWITCH ASSY., ENGINE STOP ...	1	-----	QC,QC/A,QC/B,QU,QU/A,QU/B,SD,SD/A,SD/B,SJ,SJ/A,SJ/B,SJK,SJK/A,SJK/B
	35120-ZM7-801	.....	1	-----	QEB2,QEB2/A,QEB4,QEB4/A,SE,SE/A,SE/B
17	35124-ZM7-000	BRACKET COMP., STOP SWITCH ..	1	-----	QC,QC/A,QC/B,QU,QU/A,QU/B,SD,SD/A,SD/B,SE,SE/A,SE/B,SJ,SJ/A,SJ/B,SJK
					SJK/A,SJK/B
	35124-ZM7-V30	.....	1	-----	QEB2,QEB2/A,QEB4,QEB4/A

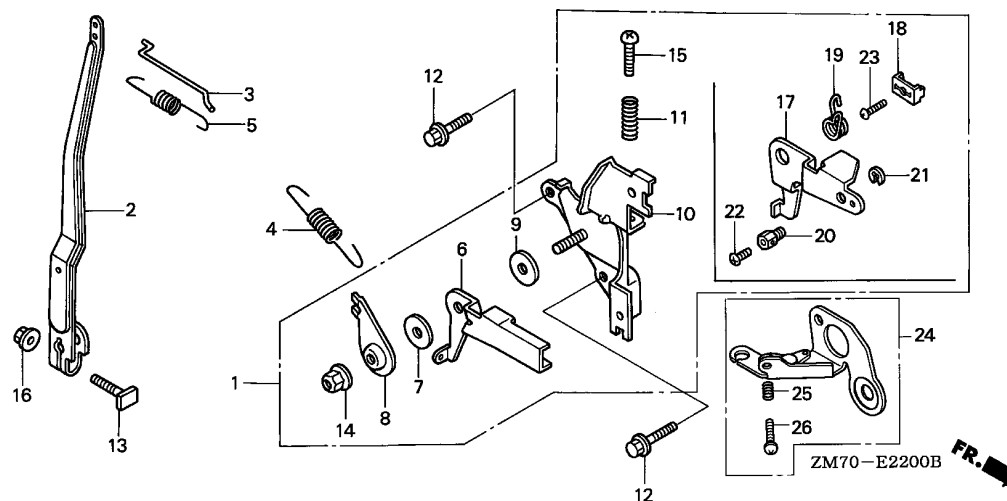




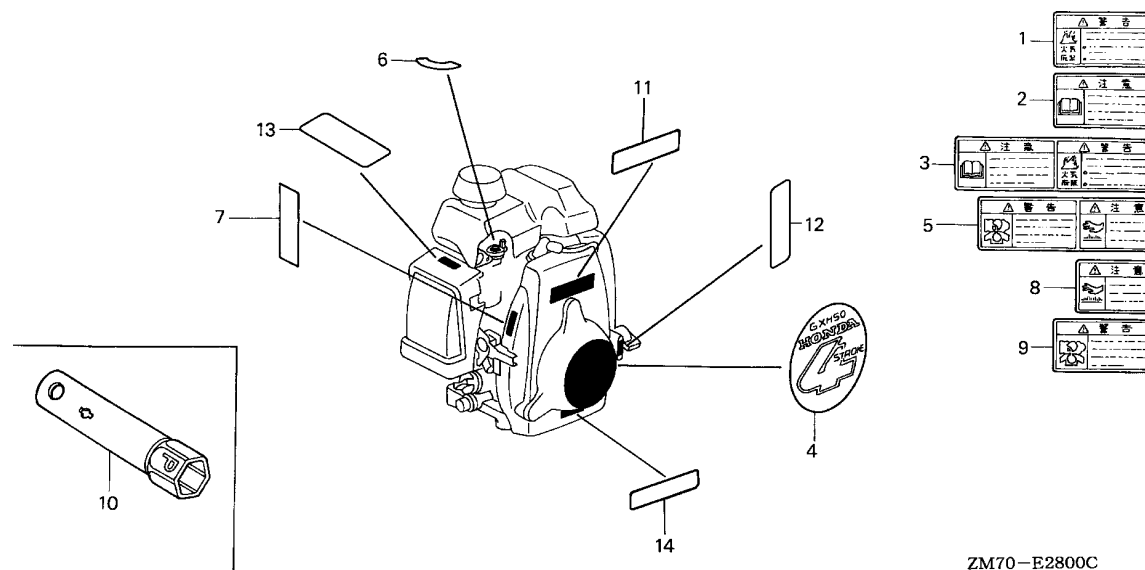
Service item

F.R.T.

Ref. No.	Part No.	Description	Reqd. QTY	Serial No.	Parts catalogue code
			GXH 50		
1	16500-ZM7-000	CONTROL ASSY. ....	1	-----	QC, QC/A, QC/B, QHA, QHA/A, QHA/B, QHE, QHE/A, QHE/B, QHM, QHM/A, QU, QU/A, QU/B, QXA, QXA/A, QXA/B, SD, SD/A, SD/B, SE, SE/A, SE/B, SJ, SJ/A, SJ/B, SPB, SPB/A, SPB/B, SJA, SJA/A, SJA/B
	16500-ZM7-U00	.....	1	-----	SJK, SJK/A, SJK/B
	16500-ZM7-V50	.....	1	-----	SPB4, SPB4/A
2	16551-ZM7-000	ARM, GOVERNOR .....	1	-----	QC, QC/A, QC/B, QU, QU/A, QU/B, QXA, QXA/A, QXA/B, SD, SD/A, SD/B, SE, SE/A, SE/B, SJ, SJ/A, SJ/B, SJK, SJK/A, SJK/B, SPB, SPB/A, SPB/B, SJA, SJA/A, SJA/B
3	16555-ZM7-000	ROD, GOVERNOR .....	1	-----	QHA, QHA/A, QHA/B, QHE, QHE/A, QHE/B, QHM, QHM/A, SPB4, SPB4/A
4	16561-ZM7-000	SPRING, GOVERNOR .....	1	-----	QEB2, QEB2/A, QEB4, QEB4/A
	16561-ZN4-000	.....	1	-----	
	16561-ZM7-D10	.....	1	-----	
5	16562-ZM7-000	SPRING, THROTTLE RETURN .....	1	-----	
6	16571-ZM7-000	LEVER, CONTROL .....	1	-----	QC, QC/A, QC/B, QHA, QHA/A, QHA/B, QHE, QHE/A, QHE/B, QHM, QHM/A, QU, QU/A, QU/B, QXA, QXA/A, QXA/B, SD, SD/A, SD/B, SE, SE/A, SE/B, SJ, SJ/A, SJ/B, SPB, SPB/A, SPB/B, SPB4, SPB4/A, SJA, SJA/A, SJA/B
7	16574-ZE1-000	SPRING, LEVER .....	1	-----	QC, QC/A, QC/B, QHA, QHA/A, QHA/B, QHE, QHE/A, QHE/B, QHM, QHM/A, QU, QU/A, QU/B, QXA, QXA/A, QXA/B, SD, SD/A, SD/B, SE, SE/A, SE/B, SJ, SJ/A, SJ/B, SPB, SPB/A, SPB/B, SPB4, SPB4/A, SJA, SJA/A, SJA/B
8	16575-ZH8-000	WASHER, CONTROL LEVER .....	1	-----	QC, QC/A, QC/B, QHA, QHA/A, QHA/B, QHE, QHE/A, QHE/B, QHM, QHM/A, QU, QU/A, QU/B, QXA, QXA/A, QXA/B, SD, SD/A, SD/B, SE, SE/A, SE/B, SJ, SJ/A, SJ/B, SPB, SPB/A, SPB/B, SPB4, SPB4/A, SJA, SJA/A, SJA/B
9	16578-ZE1-000	SPACER, CONTROL LEVER .....	1	-----	QC, QC/A, QC/B, QHA, QHA/A, QHA/B, QHE, QHE/A, QHE/B, QHM, QHM/A, QU, QU/A, QU/B, QXA, QXA/A, QXA/B, SD, SD/A, SD/B, SE, SE/A, SE/B, SJ, SJ/A, SJ/B, SPB, SPB/A, SPB/B, SPB4, SPB4/A, SJA, SJA/A, SJA/B
10	16580-ZM7-000	BASE COMP., CONTROL .....	1	-----	QC, QC/A, QC/B, QHA, QHA/A, QHA/B, QHE, QHE/A, QHE/B, QHM, QHM/A, QU, QU/A, QU/B, QXA, QXA/A, QXA/B, SD, SD/A, SD/B, SE, SE/A, SE/B, SJ, SJ/A, SJ/B, SPB, SPB/A, SPB/B, SPB4, SPB4/A, SJA, SJA/A, SJA/B
	16580-ZM7-U00	.....	1	-----	SJK, SJK/A, SJK/B



Ref. No.	Part No.	Description	Reqd. QTY	Serial No.	Parts catalogue code
			GXH 50		
11	16584-ZE3-790	SPRING, CONTROL ADJUSTING ...	1	-----	QC, QC/A, QC/B, QHA, QHA/A, QHA/B, QHE, QHE/A, QHE/B, QHM, QHM/A, QU, QU/A, QU/B, QXA, QXA/A, QXA/B, SD, SD/A, SD/B, SE, SE/A, SE/B, SJ, SJ/A, SJ/B, SJK, SJK/A, SJK/B, SPB, SPB/A, SPB/B, SPB4, SPB4/A, SXA, SXA/A, SXA/B
12	90003-892-000	BOLT, FLANGE, 5X12 .....	2	-----	
13	90015-ZE5-010	BOLT, GOVERNOR ARM .....	1	-----	
14	90114-SAO-000	NUT, SELF-LOCK, 6MM .....	1	-----	QC, QC/A, QC/B, QHA, QHA/A, QHA/B, QHE, QHE/A, QHE/B, QHM, QHM/A, QU, QU/A, QU/B, QXA, QXA/A, QXA/B, SD, SD/A, SD/B, SE, SE/A, SE/B, SJ, SJ/A, SJ/B, SPB, SPB/A, SPB/B, SPB4, SPB4/A, SXA, SXA/A, SXA/B
	94050-06000	NUT, FLANGE, 6MM .....	1	-----	SJK, SJK/A, SJK/B
15	93500-05020-0A	SCREW, PAN, 5X20 .....	1	-----	QC, QC/A, QC/B, QHA, QHA/A, QHA/B, QHE, QHE/A, QHE/B, QHM, QHM/A, QU, QU/A, QU/B, QXA, QXA/A, QXA/B, SD, SD/A, SD/B, SE, SE/A, SE/B, SJ, SJ/A, SJ/B, SJK, SJK/A, SJK/B, SPB, SPB/A, SPB/B, SXA, SXA/A, SXA/B
	93500-05025-0G	SCREW, PAN, 5X25 .....	1	-----	SPB4, SPB4/A
16	94050-06000	NUT, FLANGE, 6MM .....	1	-----	
17	16571-ZM7-U00	LEVER, CONTROL .....	1	-----	SJK, SJK/A, SJK/B
18	16576-891-000	HOLDER, CABLE .....	1	-----	SJK, SJK/A, SJK/B
19	16592-ZM7-U00	SPRING, RETURN .....	1	-----	SJK, SJK/A, SJK/B
20	16594-883-010	HOLDER, WIRE .....	1	-----	SJK, SJK/A, SJK/B
21	90605-230-000	CIRCLIP, 5MM .....	1	-----	SJK, SJK/A, SJK/B
22	93500-04006-0H	SCREW, PAN, 4X6 .....	1	-----	SJK, SJK/A, SJK/B
23	93500-05016-0A	SCREW, PAN, 5X16 .....	1	-----	SJK, SJK/A, SJK/B
24	16500-ZM7-D10	CONTROL ASSY. ....	1	-----	QEB2, QEB2/A, QEB4, QEB4/A
25	16571-836-000	SPRING, CONTROL ADJUSTING ...	1	-----	QEB2, QEB2/A, QEB4, QEB4/A
26	93500-04018-0H	SCREW, PAN, 4X18 .....	1	-----	QEB2, QEB2/A, QEB4, QEB4/A

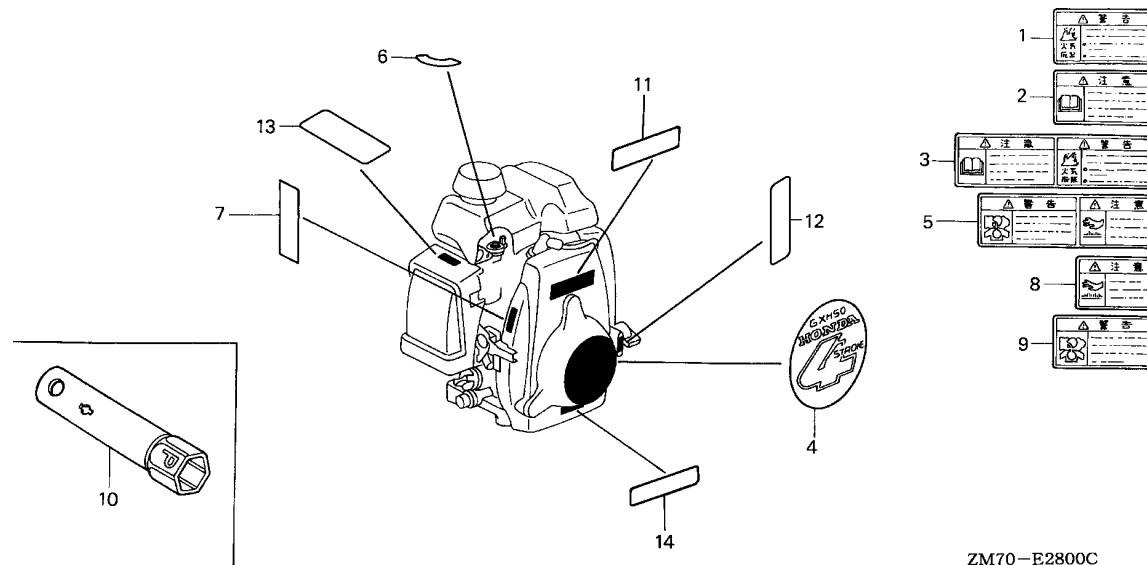


ZM70-E2800C

Service item

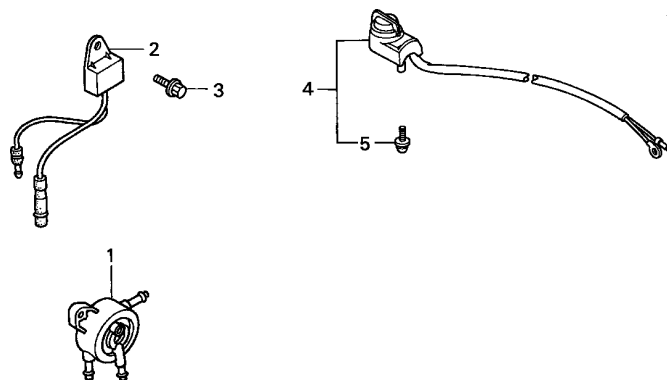
F.R.T.

Ref. No.	Part No.	Description	Reqd. QTY	Serial No.	Parts catalogue code
			GXH 50		
1	87106-737-J00	MARK, FUEL WARNING .....	(1)	-----	SJ,SJ/A,SJ/B
2	87150-ZH8-000	MARK, CAUTION (JAPANESE) ....	(1)	-----	SJ,SJ/A,SJ/B
3	87520-ZH8-000	MARK A, COMBINATION .....	(1)	-----	SJ,SJ/A,SJ/B
	87520-ZL8-810	MARK A, COMBINATION (J) .....	1	-----	SJK,SJK/A,SJK/B
4	87521-ZM7-000	EMBLEM .....	1	-----	QC,QHA,QHE,QU,QXA,SD,SE,SJ,SJK,SPB,SXA
	87521-ZM7-010	.....	1	1344772	QC/A,QHA/A,QHE/A,QU/A,QXA/A,SD/A,SE/A,SJ/A,SJK/A,SPB/A,SXA/A
			1	1396852	QC/B,QEB2/A,QEB4/A,QHA/B,QHE/B,QHM,QHM/A,QU/B,QXA/B,SD/B,SE/B,SJ/B,SJK/B
			1	1344773	SPB/B,SPB4,SPB4/A,SXA/B
			1	1396852	QC/A,QHA/A,QHE/A,QU/A,QXA/A,SD/A,SE/A,SJ/A,SJK/A,SPB/A,SXA/A
			1	1396852	QEB2,QEB4
5	87526-ZH8-000	MARK B, COMBINATION .....	(1)	-----	SJ,SJ/A,SJ/B
	87526-ZL8-810	MARK B, COMBINATION (J) .....	1	-----	SJK,SJK/A,SJK/B
6	87528-ZG0-W40	MARK, COCK (EXTERNAL) .....	1	-----	QC,QC/A,QC/B,QEB2/A,QEB4/A,QHA,QHA/A,QHA/B,QHE,QHE/A,QHE/B,QHM,QHM/A,QU
					QU/A,QU/B,QXA,QXA/A,QXA/B,SD,SD/A,SD/B,SE,SE/A,SE/B,SJ,SJ/A,SJ/B,SJK
					SJK/A,SJK/B,SPB,SPB/A,SPB/B,SPB4,SPB4/A,SXA,SXA/A,SXA/B
			1	1396852	QEB2,QEB4
7	87532-ZM3-G00	MARK, THROTTLE INDICATION ...	1	-----	QC,QC/A,QC/B,QHA,QHA/A,QHA/B,QHE,QHE/A,QHE/B,QHM,QHM/A,QU,QU/A,QU/B,QXA
					QXA/A,QXA/B,SD,SD/A,SD/B,SE,SE/A,SE/B,SJ,SJ/A,SJ/B,SPB,SPB/A,SPB/B,SPB4
					SPB4/A,SXA,SXA/A,SXA/B
8	87539-737-J00	MARK, HEAT CAUTION .....	(1)	-----	SJ,SJ/A,SJ/B
9	87561-733-J00	MARK, EX. GAS WARNING .....	(1)	-----	SJ,SJ/A,SJ/B
10	89216-130-690	WRENCH, SPARK PLUG .....	1	-----	SJK,SJK/A,SJK/B
			(1)	-----	QC,QC/A,QC/B,QEB2,QEB2/A,QEB4,QEB4/A,QHA,QHA/A,QHA/B,QHE,QHE/A,QHE/B,QHM
					QHM/A,QU,QU/A,QU/B,QXA,QXA/A,QXA/B,SD,SD/A,SD/B,SE,SE/A,SE/B,SJ,SJ/A,SJ/B
					SPB,SPB/A,SPB/B,SPB4,SPB4/A,SXA,SXA/A,SXA/B
11	87135-ZE2-010	LABEL, E-SPEC (EPA STANDARD)	1	-----	QHE,QU,SD,SE,SJ,SJK,SPB



ZM70-E2800C

Ref. No.	Part No.	Description	Reqd. QTY	Serial No.	Parts catalogue code
			GXH 50		
11)	87135-ZE2-020	LABEL, E-SPEC (15.5X27.5) ...	1	-----	QEB4,QEB4/A,QHE/A,QHE/B,QU/A,QU/B,SD/A,SD/B,SE/A,SE/B,SJ/A,SJ/B,SJK/A SJK/B,SPB/A,SPB/B
12	87501-ZL8-000	MARK, ENGINE SWITCH INDICATION	1	-----	QEB2,QEB2/A
	87501-ZL8-800	MARK, ENGINE SWITCH INDICATION (EN)	1	-----	QEB4,QEB4/A
13	87528-Z0D-000	MARK, CHOKE INDICATION .....	1	-----	QEB2,QEB2/A,QEB4,QEB4/A
14	87637-ZM3-800	MARK (C-TICK) .....	1	-----	QU/B



ZM70-B4000A

Service item

F.R.T.

Ref. No.	Part No.	Description	Reqd. QTY GXH 50	Serial No.	Parts catalogue code
1	16700-ZT3-003	PUMP ASSY., FUEL .....	1	-----	QHA,QHE
	16700-ZT3-013	.....	1	-----	QHA/A,QHA/B,QHE/A,QHE/B,QHM,QHM/A
2	34150-ZH7-003	ALERT UNIT, OIL .....	1	-----	QHA,QHA/A,QHA/B,QHE,QHE/A,QHE/B,QHM,QHM/A
3	95701-06008-00	BOLT, FLANGE, 6X8 .....	1	-----	QHA,QHA/A,QHA/B,QHE,QHE/A,QHE/B,QHM,QHM/A
4	35120-746-C21	SWITCH ASSY., ENGINE STOP ...	1	-----	SPB4,SPB4/A
5	90105-733-D61	BOLT, 3X12(SEMS) .....	1	-----	SPB4,SPB4/A

# PART NO. INDEX

E 1

Part Number	Address	Page	Ref.	Part Number	Address	Page	Ref.	Part Number	Address	Page	Ref.	Part Number	Address	Page	Ref.	Part Number	Address	Page	Ref.
11000				15572-ZM7-000	C1	12	4	16952-ZE6-000	C16	27	1	30000				90000			
11300-ZM7-000	C3	14	1	15600-ZM7-003	C3	14	2	16953-ZG0-812	C12	23	16					90001-ZM7-000	C6	17	8
11300-ZM7-406	C3	14	1	15625-ZE1-003	C3	14	3	16954-ZE1-812	C12	23	17	30500-ZM7-004	D2	29	1	90002-ZM7-000	C14	25	5
11300-ZM7-407	C3	14	1	16000				16956-ZE1-811	C12	23	18	31000				90003-892-000	C1	12	7
11300-ZM7-800	C3	14	1					16957-ZE1-812	C12	23	19	31110-ZM7-004	D2	29	2		C2	13	14
11340-ZM7-010	C4	15	1	16010-ZG0-015	C11	22	1	17000									D4	31	12
11340-ZM7-020	C4	15	1	16010-ZM7-003	C11	22	1					32000				90004-ZC3-000	D2	29	8
11340-ZM7-801	C4	15	1	16011-ZE0-005	C11	22	2	17211-ZM7-000	C13	24	1					90004-ZM7-000	C13	24	7
11340-ZM7-802	C4	15	1	16013-ZG0-811	C11	22	3	17220-ZM7-000	C13	24	2	32195-ZM7-800	D2	29	3	90004-ZM7-V30	C13	24	7
11340-ZM7-V30	C4	15	1	16015-ZG0-811	C12	23	24	17227-ZM7-000	C13	24	3	32195-ZM4-000	D2	29	15	90006-ZM7-000	C3	14	4
12000				16015-ZM7-003	C11	22	4	17228-ZG0-000	C13	24	4						C4	15	4
12100-ZM7-000	C1	12	1	16016-ZE0-005	C11	22	5	17228-ZM7-000	C12	23	28	34000				90012-892-000	C14	25	6
12100-ZM7-407	C1	12	1	16016-ZH7-W01	C12	23	26									90012-896-750	D2	29	10
12100-ZM7-417	C1	12	1	16024-ZB9-005	C11	22	6	17230-ZM7-000	C13	24	5	34150-ZH7-003	D2	29	4	90012-ZM3-003	C9	20	11
12311-ZM7-000	C1	12	2	16024-ZE1-811	C12	23	25	17231-ZM7-000	C13	24	6		D7	34	2	90015-ZE5-010	D4	31	13
12311-ZM7-010	C1	12	2	16028-ZG0-811	C11	22	7	17511-ZM7-000	C16	27	2					90042-ZM7-000	C10	21	2
				16044-ZM7-003	C11	22	8	17532-ZM7-000	C16	27	3	35000				90043-ZM7-000	C10	21	3
				16100-ZM7-003	C11	22	9	17533-ZM7-000	C16	27	4					90103-P4V-010	C14	25	7
				16100-ZM7-801	C11	22	9	17560-ZM7-000	C16	27	5	35120-746-C21	D7	34	4	90105-733-D61	D7	34	5
				16100-ZM7-803	C11	22	9	17620-ZL8-003	C16	27	6	35120-ZM7-003	D2	29	16	90114-SA0-000	D4	31	14
				16100-ZM7-G01	C11	22	9	17620-ZL8-013	C16	27	6	35120-ZM7-801	D2	29	16	90136-SM4-901	C14	25	8
				16100-ZM7-G11	C11	22	9	17701-ZM7-000	C16	27	7	35124-ZM7-000	D2	29	17	90206-KM3-000	C8	19	14
13000				16100-ZM7-G13	C11	22	9	18000				35124-ZM7-800	D2	29	5	90441-ZM7-000	C4	15	5
13010-ZM7-000	C6	17	1	16124-ZE0-005	C11	22	10	18310-ZM7-003	C14	25	1	35124-ZM7-V30	D2	29	17	90443-ZC3-000	C1	12	8
13101-ZM7-000	C6	17	2	16166-ZM7-003	C12	23	11	18310-ZM7-801	C14	25	1	35480-ZM7-801	D2	29	6	90471-580-000	C3	14	5
13101-ZM7-010	C6	17	2	16199-ZM7-003	C12	23	12	18310-ZM7-V31	C15	26	11					90602-ZM7-000	C4	15	6
13111-122-000	C6	17	3	16211-ZM7-000	C12	23	13	18310-ZM7-V41	C15	26	11	36000				90605-230-000	D4	31	21
13115-147-000	C6	17	4	16212-ZM7-000	C12	23	14	18320-ZM7-000	C14	25	2	36100-ZE1-015	D2	29	7	90684-ZA0-601	D2	29	11
13200-ZM7-000	C6	17	5	16220-ZM7-V30	C12	23	27	18350-ZM7-801	C14	25	3					90702-P6R-008	C7	18	3
13200-ZM7-V30	C6	17	5	16221-ZG0-801	C12	23	15	18515-ZM7-000	C14	25	4	87000				90741-959-000	C5	16	5
13281-ZM7-000	C6	17	7	16500-ZM7-000	D3	30	1									90741-ZM7-000	C5	16	5
13281-ZM7-V30	C6	17	7	16500-ZM7-D10	D4	31	24	19000				87106-737-J00	D5	32	1	91000			
13310-ZM7-000	C5	16	1	16500-ZM7-U00	D3	30	1					87135-ZE2-010	D5	32	11	91202-HC5-003	C3	14	6
13310-ZM7-800	C5	16	2	16500-ZM7-V50	D3	30	1	19052-MB4-880	C16	27	8	87135-ZE2-020	D6	33	11		C4	15	7
13310-ZM7-V30	C5	16	2	16510-ZM7-000	C4	15	2	19610-ZM7-000ZA	C10	21	1	87150-ZH8-000	D5	32	2	91231-ZC3-003	C1	12	9
13331-ZM7-000	C5	16	3	16531-ZM7-000	C4	15	3	19610-ZM7-000ZC	C10	21	1	87501-ZL8-000	D6	33	12	91301-ZA8-003	D2	29	12
14000				16541-ZM7-000	C1	12	5	19610-ZM7-000ZD	C10	21	1	87501-ZL8-800	D6	33	12	91301-ZM7-003	D2	29	12
14100-ZG0-000	C7	18	2	16551-ZM7-000	D3	30	2	19631-ZM7-000	C1	12	6	87520-ZH8-000	D5	32	3	91502-ZM3-000	C14	25	9
14100-ZM7-000	C7	18	2	16555-ZM7-000	D3	30	3					87520-ZL8-810	D5	32	3	91503-ZM7-000	C13	24	8
14100-ZM7-010	C7	18	2	16561-ZM7-000	D3	30	4	28000				87521-ZM7-000	D5	32	4	91504-ZM7-003	C9	20	9
14126-ZG0-003	C7	18	3	16561-ZM7-D10	D3	30	4					87521-ZM7-010	D5	32	4				
14410-ZM7-000	C7	18	4	16561-ZN4-000	D3	30	4	28400-ZM7-003	C9	20	1	87526-ZH8-000	D5	32	5	93000			
14431-ZM7-000	C7	18	5	16562-ZM7-000	D3	30	5	28400-ZM7-V31	C9	20	1	87526-ZL8-810	D5	32	5	93500-03005-0A	C1	12	10
14435-ZM7-003	C7	18	6	16571-836-000	D4	31	25	28404-968-004	C9	20	12	87528-ZG0-W40	D5	32	6	93500-03006-1H	C12	23	21
14451-ZM7-000	C7	18	7	16571-ZM7-000	D3	30	6	28410-ZM7-V31	C9	20	2	87532-ZM3-G00	D5	32	7	93500-04006-0H	D4	31	22
14711-ZM7-000	C7	18	8	16571-ZM7-U00	D4	31	17	28414-ZM7-003	C9	20	2	87539-737-J00	D5	32	8	93500-04018-0H	D4	31	26
14721-ZM7-000	C7	18	9	16574-ZE1-000	D3	30	7	28421-ZM7-003	C9	20	3	87561-733-J00	D5	32	9	93500-05016-0A	D4	31	23
14731-ZM7-003	C7	18	10	16575-ZH8-000	D3	30	8	28433-ZM3-003	C9	20	4	87637-ZM3-800	D6	33	14	93500-05020-0A	D4	31	15
14731-ZM7-013	C7	18	10	16576-891-000	D4	31	18	28442-ZL8-003	C9	20	14					93500-05025-0G	D4	31	15
14732-ZG0-003	C8	19	15	16578-ZE1-000	D3	30	9	28451-ZM7-003	C9	20	5	89000				93903-24110	C14	25	10
14751-ZM7-000	C7	18	11	16580-ZM7-000	D3	30	10	28459-ZM7-003	C9	20	6								
14754-ZM7-000	C7	18	12	16580-ZM7-U00	D3	30	10	28461-ZH8-003	C9	20	13	89216-130-690	D5	32	10	94000			
14771-ZM3-000	C7	18	13	16584-ZE3-790	D4	31	11	28461-ZM3-003	C9	20	7					94050-05000	C9	20	10
14771-ZM3-010	C8	19	13	16592-ZM7-U00	D4	31	19	28462-ZG0-003	C9	20	8					94050-06000	D4	31	14
15000				16594-883-010	D4	31	20	28462-ZM7-003	C9	20	8								
15571-ZM7-003	C1	12	3	16700-ZT3-003	D7	34	1												
				16700-ZT3-013	D7	34	1												

3

# PART NO. INDEX

E 2

Part Number	Address	Page	Ref.	Part Number	Address	Page	Ref.	Part Number	Address	Page	Ref.	Part Number	Address	Page	Ref.	Part Number	Address	Page	Ref.
94050-06000	D4	31	16																
94050-10000	D2	29	13																
94251-06000	C1	12	11																
94301-06100	C4	15	8																
95000																			
95002-02080	C16	27	9																
95002-02100	D1	28	10																
95002-02120	D1	28	10																
95003-05010-31	C12	23	12																
95005-70075-30	C13	24	9																
95701-06008-00	D2	29	14																
	D7	34	3																
95701-06020-07	D1	28	11																
95701-08012-08	C3	14	7																
96000																			
96100-62030-00	C5	16	4																
96220-60150	C1	12	12																
98000																			
98056-54750	C1	12	13																
98056-54757	C1	12	13																
98056-54770	C1	12	13																
98056-54777	C2	13	13																
98056-55750	C2	13	13																
98056-55757	C2	13	13																
98056-55770	C2	13	13																
98056-55777	C2	13	13																
99000																			
99101-ZG0-0480	C12	23	22																
99101-ZG0-0500	C12	23	22																
99101-ZG0-0520	C12	23	22																
99101-ZG0-0550	C12	23	22																
99204-ZE2-0350	C12	23	23																

3

# PART NAME INDEX

F 1

Part name	Address	Page	Ref.	Part name	Address	Page	Ref.	Part name	Address	Page	Ref.
[ A ]				[ L ]				[ M ]			
ALERT UNIT, OIL .....	D2	29	4	COLLAR, AIR CLEANER .....	C13	24	8	MARK .....	D6	33	14
ARM, GOVERNOR .....	D7	34	2	COLLAR, CANISTER MOUNTING .....	C16	27	8	MARK A, COMBINATION .....	D5	32	3
ARM, SWING .....	D3	30	2	COLLAR, LIFTER .....	C7	18	12	MARK B, COMBINATION .....	D5	32	5
ARM, VALVE ROCKER .....	C9	20	6	COLLAR, TOP COVER .....	C14	25	9	MARK, CAUTION .....	D5	32	2
ARRESTER COMP., SPARK .....	C7	18	5	CONTROL ASSY. ....	D3	30	1	MARK, CHOKE INDICATION .....	D6	33	13
	C14	25	3		D4	31	24	MARK, COCK .....	D5	32	6
[ B ]				CORD, STOP SWITCH .....	D2	29	3	MARK, ENGINE SWITCH INDICATION .....	D6	33	12
BARREL COMP., CYLINDER .....	C1	12	1					MARK, EX. GAS WARNING .....	D5	32	9
BASE COMP., CONTROL .....	D3	30	10	COVER COMP., AIR CLEANER .....	C13	24	5	MARK, FUEL WARNING .....	D5	32	1
BEARING, RADIAL BALL, 6203 ...	C5	16	4	COVER COMP., CRANKCASE SIDE ...	C4	15	1	MARK, HEAT CAUTION .....	D5	32	8
BOLT, 3X12 .....	D7	34	5	COVER COMP., FAN .....	C10	21	1	MARK, THROTTLE INDICATION .....	D5	32	7
BOLT, CONNECTING ROD .....	C6	17	8	COVER, AIR CLEANER .....	C13	24	6	MUFFLER COMP. ....	C14	25	1
BOLT, FLANGE, 5X12 .....	C1	12	7	COVER, HEAD .....	C1	12	2		C15	26	11
	C2	13	14	CRANKSHAFT COMP. ....	C5	16	1	[ N ]			
	D4	31	12	[ D ]				NOZZLE, MAIN .....	C12	23	11
BOLT, FLANGE, 5X14 .....	D2	29	10	DIPPER, CONNECTING ROD .....	C6	17	7	NUT, FLANGE, 10MM .....	D2	29	13
BOLT, FLANGE, 5X16 .....	C14	25	6	DOWEL PIN, 6X10 .....	C4	15	8	NUT, FLANGE, 5MM .....	C9	20	10
BOLT, FLANGE, 5X20 .....	D2	29	8	[ E ]				NUT, FLANGE, 6MM .....	D4	31	14
BOLT, FLANGE, 5X23 .....	C3	14	4	ELEMENT, AIR CLEANER .....	C13	24	1				
	C4	15	4	EMBLEM .....	D5	32	4	NUT, SELF-LOCK, 5MM .....	C14	25	8
BOLT, FLANGE, 5X35 .....	C14	25	7	[ F ]				NUT, SELF-LOCK, 6MM .....	D4	31	14
BOLT, FLANGE, 5X75 .....	C13	24	7	FLOAT SET .....	C11	22	3	NUT, TAPPET ADJUSTING .....	C8	19	14
BOLT, FLANGE, 5X80 .....	C13	24	7	FLYWHEEL COMP. ....	D2	29	2	[ O ]			
BOLT, FLANGE, 6X20 .....	D1	28	11	[ G ]				OIL SEAL, 17X27X5 .....	C3	14	6
BOLT, FLANGE, 6X8 .....	D2	29	14	GASKET SET .....	C11	22	1		C4	15	7
	D7	34	3	GOVERNOR ASSY. ....	C4	15	2	OIL SEAL, 5X11X5 .....	C1	12	9
BOLT, FLANGE, 8X12 .....	C3	14	7	GRIP, STARTER .....	C9	20	13	O-RING, 34.6X2.5 .....	D2	29	12
BOLT, GOVERNOR ARM .....	D4	31	13	GUIDE, AIR .....	C14	25	4	[ P ]			
BOLT, STUD .....	C10	21	2	GUIDE, ROPE .....	C9	20	4	PACKING, 8MM .....	C3	14	5
BOLT, STUD, 2,5X55 .....	C14	25	5	[ H ]				PACKING, AIR CLEANER .....	C12	23	28
BRACKET COMP., STOP SWITCH ...	D2	29	5	HOLDER, CABLE .....	D4	31	18		C13	24	4
			17	HOLDER, WIRE .....	D4	31	20	PACKING, CARBURETOR .....	C12	23	15
[ C ]				[ I ]				PACKING, FUEL COCK .....	C12	23	19
CAMSHAFT ASSY. ....	C7	18	2	INSULATOR, CARBURETOR .....	C12	23	13	PACKING, INSULATOR .....	C12	23	14
CAP ASSY., FUEL TANK .....	C16	27	6	[ J ]				PACKING, OIL FILLER CAP .....	C3	14	3
CAP ASSY., OIL FILLER .....	C3	14	2	JET SET, PILOT, .....	C12	23	23	PIN, LOCK, 6MM .....	C1	12	11
CARBURETOR ASSY. ....	C11	22	9	JET, MAIN, .....	C12	23	22	PIN, OIL PUMP .....	C7	18	3
CASE ASSY., OIL .....	C3	14	1	[ K ]				PIN, PISTON, 10X33 .....	C6	17	3
CASE COMP., AIR CLEANER .....	C13	24	2	KEY, 4.78MM .....	C5	16	5	PISTON .....	C6	17	2
CASE COMP., STARTER .....	C9	20	2	KEY, 5MM .....	C5	16	5	PIVOT, ROCKER ARM .....	C7	18	7
CASE, RECOIL STARTER .....	C9	20	2	KEY, SPECIAL .....	C5	16	3	PLATE, LEVER SETTING .....	C12	23	17
CHAMBER SET, FLOAT .....	C11	22	4	KNOB, RECOIL STARTER .....	C9	20	7				
	C12	23	24								
CHOKE SET .....	C11	22	8								
CIRCLIP, 5MM .....	D4	31	21								
CLIP, GOVERNOR HOLDER .....	C4	15	6								
CLIP, HARNESS .....	D2	29	11								
CLIP, PISTON PIN, 10MM .....	C6	17	4								
CLIP, TUBE .....	C16	27	9								
	D1	28	10								
COIL ASSY., IGNITION .....	D2	29	1								
COLLAR .....	C9	20	9								



# PART NAME INDEX

F 2

Part name	Address	Page	Ref.	Part name	Address	Page	Ref.	Part name	Address	Page	Ref.
PLATE, STOPPER .....	C1	12	4	SWITCH ASSY., ENGINE STOP .....	D2	29	7				
PLUG, SPARK .....	C1	12	13				16				
	C2	13	13		D7	34	4				
PROTECTOR COMP., MUFFLER .....	C14	25	2	SWITCH ASSY., OIL LEVEL .....	D2	29	6				
PULLEY, RECOIL STARTER .....	C9	20	5								
PUMP ASSY., FUEL .....	D7	34	1	[ T ]							
[ R ]				TANK, FUEL .....	C16	27	2				
REEL, RECOIL STARTER .....	C9	20	3	TUBE .....	C12	23	12				
RETAINER, VALVE SPRING .....	C7	18	13	TUBE A, FUEL .....	C16	27	7				
	C8	19	13	TUBE, 7X75 .....	C13	24	9				
RING SET, PISTON .....	C6	17	1	TUBE, VINYL, 3.5X6.5X100 .....	C12	23	12				
ROD ASSY., CONNECTING .....	C6	17	5	[ V ]							
ROD, GOVERNOR .....	D3	30	3	VALVE SET, FLOAT .....	C11	22	2				
ROD, PUSH .....	C7	18	4	VALVE, EX. ....	C7	18	9				
ROLLER .....	C7	18	3	VALVE, IN. ....	C7	18	8				
			6	VALVE, OIL OUTLET .....	C1	12	3				
ROLLER, 6X15 .....	C1	12	12	[ W ]							
ROPE, RECOIL STARTER .....	C9	20	8	WASHER, 4.2X13 .....	C4	15	5				
RUBBER A, TANK MOUNTING .....	C16	27	3	WASHER, 5.2X9 .....	C1	12	8				
RUBBER B, TANK MOUNTING .....	C16	27	4	WASHER, CONTROL LEVER .....	D3	30	8				
[ S ]				WRENCH, SPARK PLUG .....	D5	32	10				
SCREW SET .....	C11	22	7								
SCREW SET, DRAIN .....	C11	22	6								
	C12	23	25								
SCREW SET, PILOT .....	C11	22	5								
	C12	23	26								
SCREW, PAN, 3X5 .....	C1	12	10								
SCREW, PAN, 3X6 .....	C12	23	21								
SCREW, PAN, 4X18 .....	D4	31	26								
SCREW, PAN, 4X6 .....	D4	31	22								
SCREW, PAN, 5X16 .....	D4	31	23								
SCREW, PAN, 5X20 .....	D4	31	15								
SCREW, PAN, 5X25 .....	D4	31	15								
SCREW, SETTING .....	C9	20	11								
SCREW, TAPPING, 4X8 .....	C14	25	10								
SCREW, THROTTLE STOP .....	C11	22	10								
SEAL, AIR CLEANER .....	C13	24	3								
SHAFT, GOVERNOR ARM .....	C1	12	5								
SHROUD .....	C1	12	6								
SLIDER, GOVERNOR .....	C4	15	3								
SPACER, CARBURETOR .....	C12	23	27								
SPACER, CONTROL LEVER .....	D3	30	9								
SPRING, COCK LEVER .....	C12	23	18								
SPRING, CONTROL ADJUSTING .....	D4	31	11								
			25								
SPRING, FRICTION .....	C9	20	12								
SPRING, GOVERNOR .....	D3	30	4								
SPRING, LEVER .....	D3	30	7								
SPRING, RECOIL STARTER .....	C9	20	14								
SPRING, RETURN .....	D4	31	19								
SPRING, THROTTLE RETURN .....	D3	30	5								
SPRING, VALVE .....	C7	18	11								
STARTER ASSY., RECOIL .....	C9	20	1								
STAY COMP., FUEL TANK .....	C16	27	5								
STRAINER, FUEL .....	C16	27	1								



---

**1**

**FOREWORD INDEX**

---

**2**

**ENGINE GROUP**

---

**3**

**PART NUMBER INDEX**

---

**4**

**PART NAME INDEX**

---





July 11, 2004



# PARTS CATALOG NEWS

Honda Motor Co., Ltd. Service Division

## PARTS CATALOG - CORRECTED

Printed in Japan

CODE NO.	14ZM70E6
PARTS CATALOG NEWS	GXH50
NEWS NO.	001

Block No.	Ref. No.	Note	Part No.	Description	Reqd. QTY	Serial No.	Parts catalog code
					GXH 50		
E-14	9	L	16100-ZM7-G13	CARBURETOR ASSY. (BF32E C) ...	1	----- 1535925	QC/B, QHA/B, QHE/B, QHM/A, QU/B, QXA/B, SD/B, SJ/B, SJK/B
		D	16100-ZM7-G14	CARBURETOR ASSY. (BF32E D) ...	1	1535926 -----	QC/B, QHA/B, QHE/B, QHM/A, QU/B, QXA/B, SD/B, SJ/B, SJK/B
	11	L	16166-ZM7-003	NOZZLE, MAIN (CARBURETOR NO.)	1	----- BF32C C	SE/B, SPB/B, SPB4/A, SXA/B
				(CARBURETOR NO.)	1	----- BF32E C	QC/B, QHA/B, QHE/B, QHM/A, QU/B, QXA/B, SD/B, SJ/B, SJK/B
		D	16166-ZM7-801	..... (CARBURETOR NO.)	1	BF32C D -----	SE/B, SPB/B, SPB4/A, SXA/B
				(CARBURETOR NO.)	1	BF32E D -----	QC/B, QHA/B, QHE/B, QHM/A, QU/B, QXA/B, SD/B, SJ/B, SJK/B
	22	T	99101-ZG0-0480	JET, MAIN, #48 (CARBURETOR NO.)	(1)	BF32C D -----	SE/B, SPB/B, SPB4/A, SXA/B
				(CARBURETOR NO.)	(1)	BF32E D -----	QC/B, QHA/B, QHE/B, QHM/A, QU/B, QXA/B, SD/B, SJ/B, SJK/B
		K	99101-ZG0-0520	JET, MAIN, #52 (CARBURETOR NO.)	(1)	----- BF32C C	SE/B, SPB/B, SPB4/A, SXA/B
				(CARBURETOR NO.)	(1)	----- BF32E C	QC/B, QHA/B, QHE/B, QHM/A, QU/B, QXA/B, SD/B, SJ/B, SJK/B
		L	99101-ZG0-0550	JET, MAIN, #55 (CARBURETOR NO.)	1	----- BF32C C	SE/B, SPB/B, SPB4/A, SXA/B
				(CARBURETOR NO.)	1	----- BF32E C	QC/B, QHA/B, QHE/B, QHM/A, QU/B, QXA/B, SD/B, SJ/B, SJK/B

NOTE A:PART NO. CHANGE D:NEWLY PROVIDED E:PART NO.DELETION K:REQUIRED NO. CORRECTION L:APPLICATION SERIAL NO. CORRECTION  
T:APPLICATION CORRECTION Z:REMARKS CHANGE

PARTS CATALOG NEWS

BOOKNo. : 14ZM70E6

Block No.	Ref. No.	Note	Part No.	Description	Reqd. QTY		Serial No.	Parts catalog code
						GXH 50		
		D	99101-ZG0-0520	JET, MAIN, #52 (CARBURETOR NO.)	1		BF32C D -----	SE/B, SPB/B, SPB4/A, SXA/B
				(CARBURETOR NO.)	1		BF32E D -----	QC/B, QHA/B, QHE/B, QHM/A, QU/B, QXA/B, SD/B, SJ/B, SJK/B
	26	L	16016-ZH7-W01	SCREW SET, PILOT (CARBURETOR NO.)	1		----- BF32C C	SE/B, SPB/B, SPB4/A, SXA/B
				(CARBURETOR NO.)	1		----- BF32E C	QC/B, QHA/B, QHE/B, QHM/A, QU/B, QXA/B, SD/B, SJ/B, SJK/B
		D	16016-ZH8-W01	SCREW SET (CARBURETOR NO.)	1		BF32C D -----	SE/B, SPB/B, SPB4/A, SXA/B
				(CARBURETOR NO.)	1		BF32E D -----	QC/B, QHA/B, QHE/B, QHM/A, QU/B, QXA/B, SD/B, SJ/B, SJK/B

NOTE A:PART NO. CHANGE D:NEWLY PROVIDED E:PART NO.DELETION K:REQUIRED NO. CORRECTION L:APPLICATION SERIAL NO. CORRECTION  
T:APPLICATION CORRECTION Z:REMARKS CHANGE

September 26, 2004



# PARTS CATALOG NEWS

Honda Motor Co., Ltd. Service Division

## PARTS CATALOG - CORRECTED

Printed in Japan

CODE NO.	14ZM70E6
PARTS CATALOG NEWS	GXH50
NEWS NO.	002

Block No.	Ref. No.	Note	Part No.	Description	Reqd. QTY GXH 50	Serial No.	Parts catalog code
E-14	8	L	16044-ZM7-003	CHOKE SET (CARBURETOR NO.)	1	----- BF32C D	SE/B, SPB/B, SPB4/A, SXA/B
				(CARBURETOR NO.)	1	----- BF32E D	QC/B, QHA/B, QHE/B, QHM/A, QU/B, QXA/B, SD/B, SJ/B, SJK/B, WK4
		D	16044-ZM7-801	..... (CARBURETOR NO.)	1	BF32C E -----	SE/B, SPB/B, SPB4/A, SXA/B
				(CARBURETOR NO.)	1	BF32E E -----	QC/B, QHA/B, QHE/B, QHM/A, QU/B, QXA/B, SD/B, SJ/B, SJK/B, WK4
	11	L	16166-ZM7-801	NOZZLE, MAIN (CARBURETOR NO.)	1	----- BF32E D	WK4
				(CARBURETOR NO.)	1	BF32C D BF32C D	SE/B, SPB/B, SPB4/A, SXA/B
				(CARBURETOR NO.)	1	BF32E D BF32E D	QC/B, QHA/B, QHE/B, QHM/A, QU/B, QXA/B, SD/B, SJ/B, SJK/B
		D	16166-ZN4-801	..... (CARBURETOR NO.)	1	BF32C E -----	SE/B, SPB/B, SPB4/A, SXA/B
				(CARBURETOR NO.)	1	BF32E E -----	QC/B, QHA/B, QHE/B, QHM/A, QU/B, QXA/B, SD/B, SJ/B, SJK/B, WK4
	26	L	16016-ZH8-W01	SCREW SET (CARBURETOR NO.)	1	----- BF32E D	WK4
				(CARBURETOR NO.)	1	BF32C D BF32C D	SE/B, SPB/B, SPB4/A, SXA/B
				(CARBURETOR NO.)	1	BF32E D BF32E D	QC/B, QHA/B, QHE/B, QHM/A, QU/B, QXA/B, SD/B, SJ/B, SJK/B

NOTE A:PART NO. CHANGE D:NEWLY PROVIDED E:PART NO.DELETION K:REQUIRED NO. CORRECTION L:APPLICATION SERIAL NO. CORRECTION  
T:APPLICATION CORRECTION Z:REMARKS CHANGE



## PARTS CATALOG NEWS

BOOKNo. : 14ZM70E6

Block No.	Ref. No.	Note	Part No.	Description	Reqd. QTY		Serial No.	Parts catalog code
						GXH 50		
		D	16016-ZH7-W01	SCREW SET, PILOT (CARBURETOR NO.)	1		BF32C E -----	SE/B, SPB/B, SPB4/A, SXA/B
				(CARBURETOR NO.)	1		BF32E E -----	QC/B, QHA/B, QHE/B, QHM/A, QU/B, QXA/B, SD/B, SJ/B, SJK/B, WK4
	28	T	17228-ZM7-000	PACKING, AIR CLEANER .....	0		-----	WK4

NOTE A:PART NO. CHANGE D:NEWLY PROVIDED E:PART NO.DELETION K:REQUIRED NO. CORRECTION L:APPLICATION SERIAL NO. CORRECTION  
T:APPLICATION CORRECTION Z:REMARKS CHANGE

October 03, 2004



# PARTS CATALOG NEWS

Honda Motor Co., Ltd. Service Division

## PARTS CATALOG - CORRECTED

Printed in Japan

CODE NO.	14ZM70E6
PARTS CATALOG NEWS	GXH50
NEWS NO.	003

Block No.	Ref. No.	Note	Part No.	Description	Reqd. QTY  GXH 50	Serial No.	Parts catalog code
E-14	9	L	16100-ZM7-803	CARBURETOR ASSY. (BF32C C) ...	1	----- 1537631	SE/B, SPB/B, SPB4/A, SXA/B
		D	16100-ZM7-804	CARBURETOR ASSY. (BF32C D) ...	1	1537632 -----	SE/B, SPB/B, SPB4/A, SXA/B

NOTE A:PART NO. CHANGE D:NEWLY PROVIDED E:PART NO.DELETION K:REQUIRED NO. CORRECTION L:APPLICATION SERIAL NO. CORRECTION  
T:APPLICATION CORRECTION Z:REMARKS CHANGE

October 24, 2004



# PARTS CATALOG NEWS

Honda Motor Co., Ltd. Service Division

## PARTS CATALOG - CORRECTED

Printed in Japan

CODE NO.	14ZM70E6
PARTS CATALOG NEWS	GXH50
NEWS NO.	004

Block No.	Ref. No.	Note	Part No.	Description	Reqd. QTY  GXH 50	Serial No.	Parts catalog code
E-14	9	L	16100-ZM7-G14	CARBURETOR ASSY. (BF32E D) ...	1	----- 1562767	WK4
					1	1535926 1562767	QC/B, QHA/B, QHE/B, QHM/A, QU/B, QXA/B, SD/B, SJ/B, SJK/B
		D	16100-ZM7-G15	CARBURETOR ASSY. (BF32E E) ...	1	1562768 -----	QC/B, QHA/B, QHE/B, QHM/A, QU/B, QXA/B, SD/B, SJ/B, SJK/B, WK4

NOTE A:PART NO. CHANGE D:NEWLY PROVIDED E:PART NO.DELETION K:REQUIRED NO. CORRECTION L:APPLICATION SERIAL NO. CORRECTION  
T:APPLICATION CORRECTION Z:REMARKS CHANGE

October 31, 2004



# PARTS CATALOG NEWS

Honda Motor Co., Ltd. Service Division

## PARTS CATALOG - CORRECTED

Printed in Japan

CODE NO.	14ZM70E6
PARTS CATALOG NEWS	GXH50
NEWS NO.	005

Block No.	Ref. No.	Note	Part No.	Description	Reqd. QTY	Serial No.	Parts catalog code
E-17	9	T	95002-02080	CLIP, TUBE (B8) .....	<div>GXH 50</div> 0	-----	VSW, VSW4

NOTE A:PART NO. CHANGE D:NEWLY PROVIDED E:PART NO.DELETION K:REQUIRED NO. CORRECTION L:APPLICATION SERIAL NO. CORRECTION  
T:APPLICATION CORRECTION Z:REMARKS CHANGE

November 07, 2004



# PARTS CATALOG NEWS

Honda Motor Co., Ltd. Service Division

## PARTS CATALOG - CORRECTED

Printed in Japan

CODE NO.	14ZM70E6
PARTS CATALOG NEWS	GXH50
NEWS NO.	006

Block No.	Ref. No.	Note	Part No.	Description	Reqd. QTY	Serial No.	Parts catalog code
E-7	7	E	13310-ZM7-U10	*PARTS NO. DELETION	GXH 50		
		A	13310-ZM7-U11	CRANKSHAFT COMP. ....	1	-----	VSW, VSW4

NOTE A:PART NO. CHANGE D:NEWLY PROVIDED E:PART NO.DELETION K:REQUIRED NO. CORRECTION L:APPLICATION SERIAL NO. CORRECTION  
T:APPLICATION CORRECTION Z:REMARKS CHANGE

November 21, 2004



# PARTS CATALOG NEWS

Honda Motor Co., Ltd. Service Division

## PARTS CATALOG - CORRECTED

Printed in Japan

CODE NO.	14ZM70E6
PARTS CATALOG NEWS	GXH50
NEWS NO.	007

Block No.	Ref. No.	Note	Part No.	Description	Reqd. QTY GXH 50	Serial No.	Parts catalog code
E-3	15	T	12367-ZE6-010	FILTER, BREATHER .....	1	1562768 -----	QC/B, QEB2/A, QEB4/A, QHA/B, QHE/B, QHM/A, QU/B, QXA/B, SD/B, SE/B SJ/B, SJK/B, SPB/B, SPB4/A, SXA/B, WK4
E-9	16	T	12209-ZM7-003	SEAL, VALVE STEM .....	1	1562768 -----	QC/B, QEB2/A, QEB4/A, QHA/B, QHE/B, QHM/A, QU/B, QXA/B, SD/B, SE/B SJ/B, SJK/B, SPB/B, SPB4/A, SXA/B, WK4
E-14	9	L	16100-ZM7-804	CARBURETOR ASSY. (BF32C D) ...	1	1537632 1562767	SE/B, SPB/B, SPB4/A, SXA/B
		A	16100-ZM7-805	CARBURETOR ASSY. (BF32C E) ...	1	1562768 -----	SE/B, SPB/B, SPB4/A, SXA/B
E-28	11	L	87135-ZE2-020	LABEL, E-SPEC (15.5X27.5) ....	1	----- 1562767	QEB4/A, QHE/B, SE/B, SPB/B, WK4

NOTE A:PART NO. CHANGE D:NEWLY PROVIDED E:PART NO.DELETION K:REQUIRED NO. CORRECTION L:APPLICATION SERIAL NO. CORRECTION  
T:APPLICATION CORRECTION Z:REMARKS CHANGE

January 02, 2005



# PARTS CATALOG NEWS

Honda Motor Co., Ltd. Service Division

## PARTS CATALOG - CORRECTED

Printed in Japan

CODE NO.	14ZM70E6
PARTS CATALOG TITLE	GXH50
NEWS NO.	008

Block No.	Ref. No.	Note	Part No.	Description	Reqd. QTY	Serial No.	Parts catalog code
E-28	6	T	87528-ZG0-W40	MARK, COCK (EXTERNAL) .....	0	-----	VSW, VSW4

NOTE A:PART NO. CHANGE D:NEWLY PROVIDED E:PART NO.DELETION K:REQUIRED NO. CORRECTION L:APPLICATION SERIAL NO. CORRECTION  
T:APPLICATION CORRECTION Z:REMARKS CHANGE

February 20, 2005



# PARTS CATALOG NEWS

Honda Motor Co., Ltd. Service Division

## PARTS CATALOG - CORRECTED

Printed in Japan

CODE NO.	14ZM70E6
PARTS CATALOG TITLE	GXH50
NEWS NO.	009

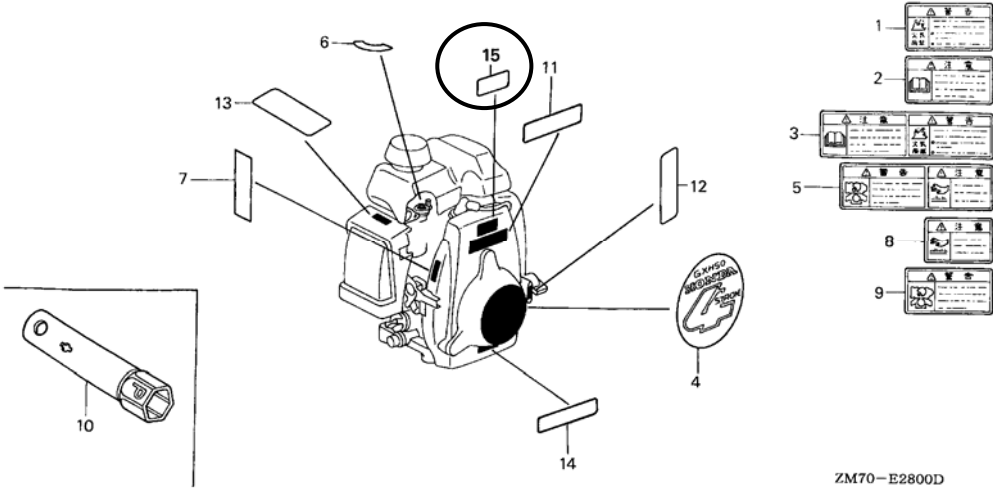
Block No.	Ref. No.	Note	Part No.	Description	Reqd. QTY GXH 50	Serial No.	Parts catalog code
E-17	2	L	17511-ZM7-000	TANK, FUEL .....	1	----- 1574706	QC/B, QEB2/A, QEB4/A, QU/B, QXA/B, SD/B, SE/B, SJ/B, SJK/B, SPB/B, SPB4/A, SXA/B, WK4
		D	17511-ZM7-010	.....	1	1574707 -----	QC/B, QEB2/A, QEB4/A, QU/B, QXA/B, SD/B, SE/B, SJ/B, SJK/B, SPB/B, SPB4/A, SXA/B, WK4

NOTE A:PART NO. CHANGE D:NEWLY PROVIDED E:PART NO.DELETION K:REQUIRED NO. CORRECTION L:APPLICATION SERIAL NO. CORRECTION  
T:APPLICATION CORRECTION Z:REMARKS CHANGE



PARTS CATALOG NEWS

BOOKNo. : 14ZM70E6

Block No.	Ref. No.	Note	Part No.	Description	Reqd. QTY	Serial No.	Parts catalog code
E-28 LABELS					GXH 50		
							
ZM70-E2800D							
E-28	15	D	87114-ZH7-000	LABEL, WARNING (NOT CERTIFIED FOR SALE)	1	1573953 -----	SD/B, SJ/B, SJK/B

NOTE A:PART NO. CHANGE D:NEWLY PROVIDED E:PART NO.DELETION K:REQUIRED NO. CORRECTION L:APPLICATION SERIAL NO. CORRECTION  
T:APPLICATION CORRECTION Z:REMARKS CHANGE

May 22, 2005



# PARTS CATALOG NEWS

Honda Motor Co., Ltd. Service Division

## PARTS CATALOG - CORRECTED

Printed in Japan

CODE NO.	14ZM70E6
PARTS CATALOG TITLE	GXH50
NEWS NO.	010

Block No.	Ref. No.	Note	Part No.	Description	Reqd. QTY	Serial No.	Parts catalog code
					GXH 50		
E-3	7	L	90019-883-000	BOLT, FLANGE, 5X10 .....	4	----- 1583133	VSW, VSW4
		D	90003-892-000	BOLT, FLANGE, 5X12 .....	4	1583134 -----	VSW, VSW4
E-6	1	L	11340-ZM7-020	COVER COMP., CRANKCASE SIDE ..	1	----- 1607578	VSW, VSW4
		D	11340-ZM7-U10	.....	1	1607579 -----	VSW, VSW4
E-20	7	L	36100-ZE1-015	SWITCH ASSY., ENGINE STOP ....	1	----- 1595709	QXA/B
		D	35120-Z0D-V81	.....	1	1595710 -----	QXA/B
E-28	12	L	87501-ZL8-000	MARK, ENGINE SWITCH INDICATION	1	----- 1602255	QEB2/A
		D	87501-ZM7-V40	.....	1	1602256 -----	QEB2/A
	15	T	87114-ZH7-000	LABEL, WARNING (NOT CERTIFIED FOR SALE)	1	1573953 -----	VSW

NOTE A:PART NO. CHANGE D:NEWLY PROVIDED E:PART NO.DELETION K:REQUIRED NO. CORRECTION L:APPLICATION SERIAL NO. CORRECTION  
T:APPLICATION CORRECTION Z:REMARKS CHANGE

January 29, 2006



# PARTS CATALOG NEWS

Honda Motor Co., Ltd. Service Division

## PARTS CATALOG - CORRECTED

Printed in Japan

CODE NO.	14ZM70E6
PARTS CATALOG TITLE	GXH50
NEWS NO.	011

Block No.	Ref. No.	Note	Part No.	Description	Reqd. QTY	Serial No.	Parts catalog code
E-28	11	L	87135-ZE2-020	LABEL, E-SPEC (15.5X27.5) ....	1	----- 1654491	QU/B, SD/B, SJ/B, SJK/B, VSW

NOTE A:PART NO. CHANGE D:NEWLY PROVIDED E:PART NO.DELETION K:REQUIRED NO. CORRECTION L:APPLICATION SERIAL NO. CORRECTION  
T:APPLICATION CORRECTION Z:REMARKS CHANGE

February 05, 2006



# PARTS CATALOG NEWS

Honda Motor Co., Ltd. Service Division

## PARTS CATALOG - CORRECTED

Printed in Japan

CODE NO.	14ZM70E6
PARTS CATALOG TITLE	GXH50
NEWS NO.	012

Block No.	Ref. No.	Note	Part No.	Description	Reqd. QTY	Serial No.	Parts catalog code
					GXH 50		
E-14	26	L	16016-ZH7-W01	SCREW SET, PILOT (CARBURETOR NO.)	1	BF32E E BF32E E	SD/B, SJ/B, SJK/B
		D	16016-ZH8-W01	SCREW SET (CARBURETOR NO.)	1	BF32E F -----	SD/B, SJ/B, SJK/B

NOTE A:PART NO. CHANGE D:NEWLY PROVIDED E:PART NO.DELETION K:REQUIRED NO. CORRECTION L:APPLICATION SERIAL NO. CORRECTION  
T:APPLICATION CORRECTION Z:REMARKS CHANGE

April 13, 2006



# PARTS CATALOG NEWS

Honda Motor Co., Ltd. Service Division

## PARTS CATALOG - CORRECTED

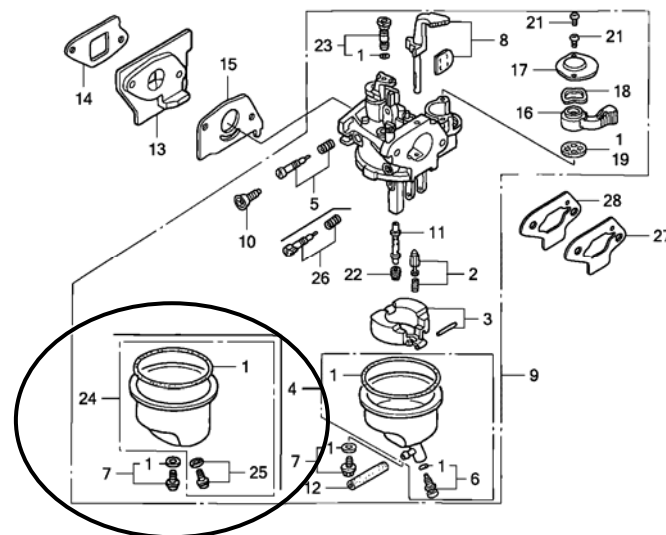
Printed in Japan

CODE NO.	14ZM70E6
PARTS CATALOG TITLE	GXH50
NEWS NO.	013

Block No.	Ref. No.	Note	Part No.	Description	Reqd. QTY	Serial No.	Parts catalog code
					GXH 50		

E-14 CARBURETOR

ILLUSTRATION CORRECTED



ZM70E1400B

NOTE A:PART NO. CHANGE D:NEWLY PROVIDED E:PART NO.DELETION K:REQUIRED NO. CORRECTION L:APPLICATION SERIAL NO. CORRECTION  
T:APPLICATION CORRECTION Z:REMARKS CHANGE

April 16, 2006



# PARTS CATALOG NEWS

Honda Motor Co., Ltd. Service Division

## PARTS CATALOG - CORRECTED

Printed in Japan

CODE NO.	14ZM70E6
PARTS CATALOG TITLE	GXH50
NEWS NO.	014

Block No.	Ref. No.	Note	Part No.	Description	Reqd. QTY GXH 50	Serial No.	Parts catalog code
E-14	9	L	16100-ZM7-G15	CARBURETOR ASSY. (BF32E E) ...	1	1562768 1667594	SD/B, SJ/B, SJK/B
		T	16100-ZM7-G16	CARBURETOR ASSY. (BF32E F) ...	1	1667595 -----	SD/B, SJ/B, SJK/B

NOTE A:PART NO. CHANGE D:NEWLY PROVIDED E:PART NO.DELETION K:REQUIRED NO. CORRECTION L:APPLICATION SERIAL NO. CORRECTION  
T:APPLICATION CORRECTION Z:REMARKS CHANGE

October 01, 2006



# PARTS CATALOG NEWS

Honda Motor Co., Ltd. Service Division

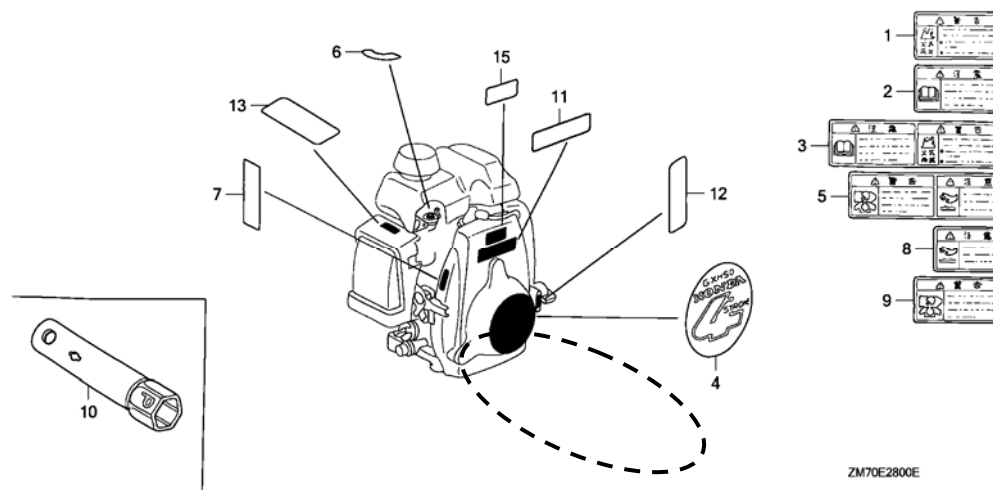
## PARTS CATALOG - CORRECTED

Printed in Japan

CODE NO.	14ZM70E6
PARTS CATALOG NEWS	GXH50
NEWS NO.	015

Block No.	Ref. No.	Note	Part No.	Description	Reqd. QTY GXH 50	Serial No.	Parts catalog code
-----------	----------	------	----------	-------------	------------------------	------------	--------------------

E-28 LABELS



E-28 14 E 87637-ZM3-800 \*PARTS NO. DELETION

NOTE A:PART NO. CHANGE D:NEWLY PROVIDED E:PART NO.DELETION K:REQUIRED NO. CORRECTION L:APPLICATION SERIAL NO. CORRECTION  
T:APPLICATION CORRECTION Z:REMARKS CHANGE

April 16, 2007



# PARTS CATALOG NEWS

Honda Motor Co., Ltd. Service Division

## PARTS CATALOG - CORRECTED

Printed in Japan

CODE NO.	14ZM70E6
PARTS CATALOG NEWS	GXH50
NEWS NO.	016

Block No.	Ref. No.	Note	Part No.	Description	Reqd. QTY GXH 50	Serial No.	Parts catalog code
E-14	8	L	16044-Z0D-003	CHOKE SET (CARBURETOR NO.)	1	----- BF31H A	VSW4
		T	16044-ZM7-801	..... (CARBURETOR NO.)	1	BF31H B -----	VSW4
<div style="border: 1px solid black; padding: 5px; display: inline-block;">PARTS NAME CORRECTED</div>							
	9	Z	16100-ZM7-U31	CARBURETOR ASSY (BF31H A/B)	1	----- -----	VSW4

NOTE A:PART NO. CHANGE D:NEWLY PROVIDED E:PART NO.DELETION K:REQUIRED NO. CORRECTION L:APPLICATION SERIAL NO. CORRECTION  
T:APPLICATION CORRECTION Z:REMARKS CHANGE



May 27, 2007



# PARTS CATALOG NEWS

Honda Motor Co., Ltd. Service Division

## PARTS CATALOG - CORRECTED

Printed in Japan

CODE NO.	14ZM70E6
PARTS CATALOG NEWS	GXH50
NEWS NO.	017

Block No.	Ref. No.	Note	Part No.	Description	Reqd. QTY GXH 50	Serial No.	Parts catalog code
E-20	1	L	30500-ZM7-004	COIL ASSY., IGNITION .....	1	----- 1730549	SD/B, SDK, SJ/B, VSW
		D	30500-ZM7-014	.....	1	1730550 -----	SD/B, SDK, SJ/B, VSW

NOTE A:PART NO. CHANGE D:NEWLY PROVIDED E:PART NO.DELETION K:REQUIRED NO. CORRECTION L:APPLICATION SERIAL NO. CORRECTION  
T:APPLICATION CORRECTION Z:REMARKS CHANGE

June 24, 2007



# PARTS CATALOG NEWS

Honda Motor Co., Ltd. Service Division

## PARTS CATALOG - CORRECTED

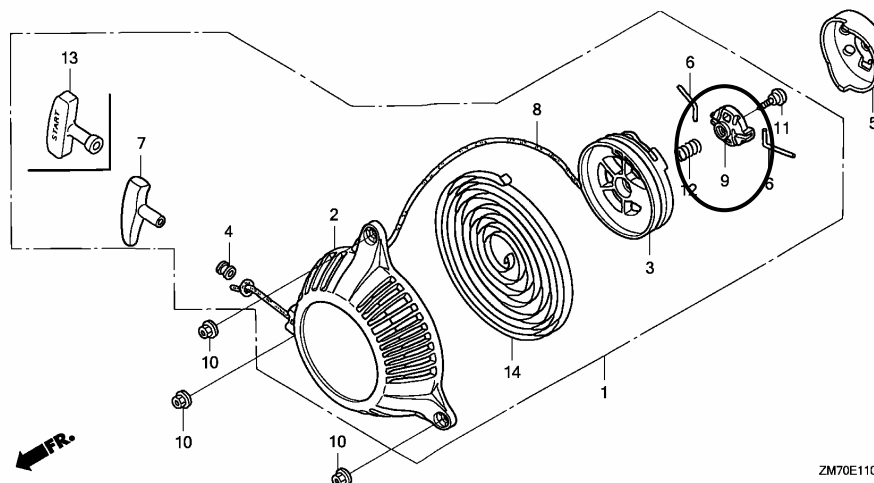
Printed in Japan

CODE NO.	14ZM70E6
PARTS CATALOG NEWS	GXH50
NEWS NO.	018

Block No.	Ref. No.	Note	Part No.	Description	Reqd. QTY	Serial No.	Parts catalog code
					GXH 50		

E-11 RECOIL STARTER

ILLUSTRATION CORRECTED



ZM70E1100C

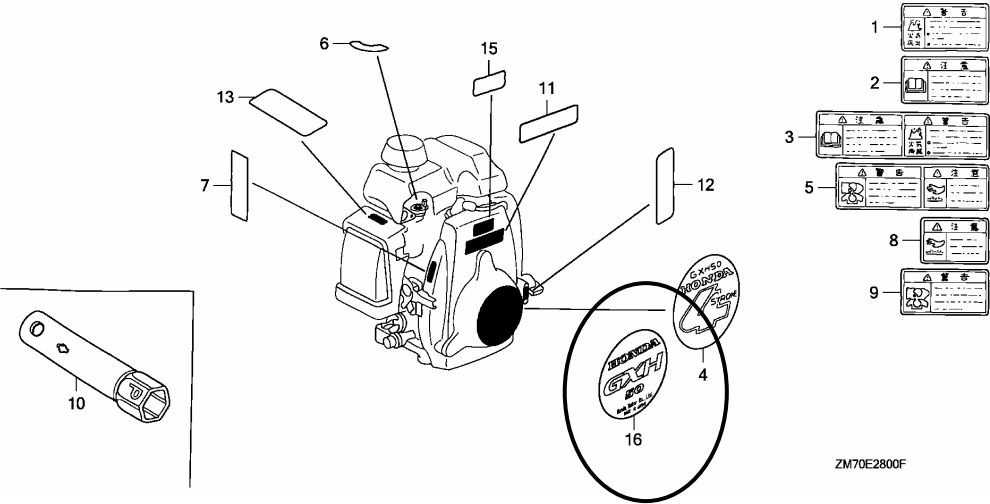
NOTE A:PART NO. CHANGE D:NEWLY PROVIDED E:PART NO.DELETION K:REQUIRED NO. CORRECTION L:APPLICATION SERIAL NO. CORRECTION  
T:APPLICATION CORRECTION Z:REMARKS CHANGE

PARTS CATALOG NEWS

BOOKNo. : 14ZM70E6

Block No.	Ref. No.	Note	Part No.	Description	Reqd. QTY	Serial No.	Parts catalog code
					GXH 50		

E-28 LABELS



ZM70E2800F

E-28	4	L	87521-ZM7-010	EMBLEM (4STROKE) .....	1	----- 1688364	SD/B, SDK, SJ/B
	16	D	87521-ZM7-020	EMBLEM (GXH50) .....	1	1688365 -----	SD/B, SDK, SJ/B

NOTE A:PART NO. CHANGE D:NEWLY PROVIDED E:PART NO.DELETION K:REQUIRED NO. CORRECTION L:APPLICATION SERIAL NO. CORRECTION  
T:APPLICATION CORRECTION Z:REMARKS CHANGE

July 22, 2007



# PARTS CATALOG NEWS

Honda Motor Co., Ltd. Service Division

## PARTS CATALOG - CORRECTED

Printed in Japan

CODE NO.	14ZM70E6
PARTS CATALOG NEWS	GXH50
NEWS NO.	019

Block No.	Ref. No.	Note	Part No.	Description	Reqd. QTY  GXH 50	Serial No.	Parts catalog code
E-20	6	L	35480-ZM7-801	SWITCH ASSY., OIL LEVEL .....	1	----- 1742797	VSW
		D	35480-ZM7-802	.....	1	1742798 -----	VSW

NOTE A:PART NO. CHANGE D:NEWLY PROVIDED E:PART NO.DELETION K:REQUIRED NO. CORRECTION L:APPLICATION SERIAL NO. CORRECTION  
T:APPLICATION CORRECTION Z:REMARKS CHANGE

October 07, 2007



# PARTS CATALOG NEWS

Honda Motor Co., Ltd. Service Division

## PARTS CATALOG - CORRECTED

Printed in Japan

CODE NO.	14ZM70E6
PARTS CATALOG NEWS	GXH50
NEWS NO.	020

Block No.	Ref. No.	Note	Part No.	Description	Reqd. QTY  GXH 50	Serial No.	Parts catalog code
E-3-10	1	E	11300-ZM7-000	*PARTS NO. DELETION			
		E	11300-ZM7-800	*PARTS NO. DELETION			
		T	11300-ZM7-406	CASE ASSY., OIL .....	1	-----	QC, QEB2, QEB4, QU, SD, SE, SJ, SJK, SPB
		T	11300-ZM7-407	.....	1	-----	QHA, QHE, QXA, SXA

NOTE A:PART NO. CHANGE D:NEWLY PROVIDED E:PART NO.DELETION K:REQUIRED NO. CORRECTION L:APPLICATION SERIAL NO. CORRECTION  
T:APPLICATION CORRECTION Z:REMARKS CHANGE

January 31, 2008



# PARTS CATALOG NEWS

Honda Motor Co., Ltd. Service Division

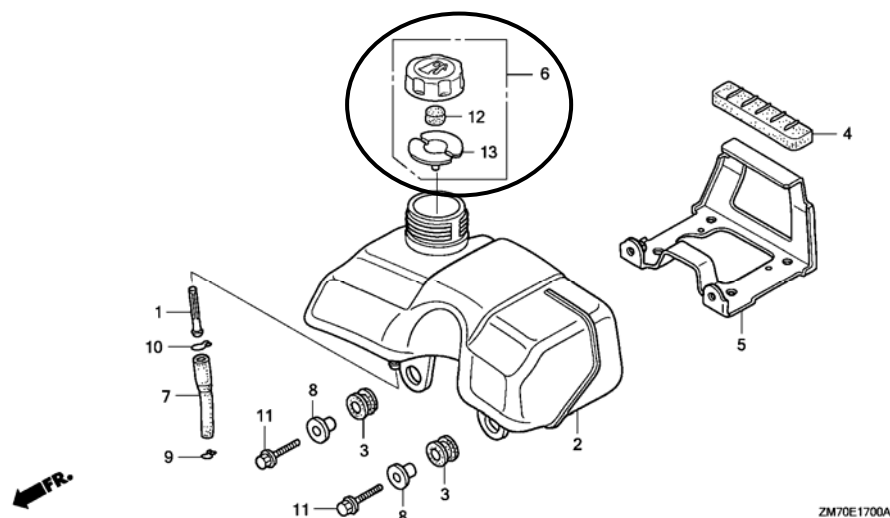
## PARTS CATALOG - CORRECTED

Printed in Japan

CODE NO.	14ZM70E6
PARTS CATALOG NEWS	GXH50
NEWS NO.	021

Block No.	Ref. No.	Note	Part No.	Description	Reqd. QTY	Serial No.	Parts catalog code
					GXH 50		

E-17 FUEL TANK



NOTE A:PART NO. CHANGE D:NEWLY PROVIDED E:PART NO.DELETION K:REQUIRED NO. CORRECTION L:APPLICATION SERIAL NO. CORRECTION  
T:APPLICATION CORRECTION Z:REMARKS CHANGE

PARTS CATALOG NEWS

BOOKNo. : 14ZM70E6

Block No.	Ref. No.	Note	Part No.	Description	Reqd. QTY		Serial No.	Parts catalog code
						GXH 50		
E-17	12	D	17622-ZL8-003	SPONGE, FUEL CAP BREATHER ....	1		-----	QC, QC/A, QC/B, QEB2, QEB2/A, QEB4, QEB4/A, QU, QU/A, QU/B, QXA QXA/A, QXA/B, SD, SD/A, SD/B, SDK, SE, SE/A, SE/B, SJ, SJ/A, SJ/B SJK, SJK/A, SJK/B, SPB, SPB/A, SPB/B, SPB4, SPB4/A, SXA, SXA/A SXA/B, WK4
	13	D	17624-ZL8-003	PACKING, FUEL CAP .....	1		-----	QC, QC/A, QC/B, QEB2, QEB2/A, QEB4, QEB4/A, QU, QU/A, QU/B, QXA QXA/A, QXA/B, SD, SD/A, SD/B, SDK, SE, SE/A, SE/B, SJ, SJ/A, SJ/B SJK, SJK/A, SJK/B, SPB, SPB/A, SPB/B, SPB4, SPB4/A, SXA, SXA/A SXA/B, WK4

NOTE A:PART NO. CHANGE D:NEWLY PROVIDED E:PART NO.DELETION K:REQUIRED NO. CORRECTION L:APPLICATION SERIAL NO. CORRECTION  
T:APPLICATION CORRECTION Z:REMARKS CHANGE