

BOM:

#25 SPROCKETS

- 1-15T .5 BORE
- 1-22T .5" BORE
- 1-26T .625 BORE
- 1-28T .625" BORE

10-#8-32x.75" FHMS

- 4-#6-32x.5" BHMS
- 6" .75" KEYED SHAFT
- 6" .5"D DRILL ROD
- 1-.75" KET SHAFT COUPLER
- 6" .25" DRILL ROD
- 5" .25" x .187" T STEEL
- 5" .0937"D DRILL ROD
- 2" .25" BRASS KEY STOCK
- 4" .187" STEEL KEYSTOCK
(TOOL STEEL?)

15" .375"x3" ALUMN 6061-T6

- 8" .25" X 2" ALUMN 6061-T6
- 4 .5"x?x? BALL BEARINGS
- 2 .5"x.625"x.375" BRONZE BUSHINGS
- 2 .5" X .300" SPACERS
- 2 .5"x.75"x.02" T SHIMS
- 4" .062"D SPRING STEEL STOCK
- 6" .125"D DRILL ROD

12" .125" T x 3" PLEXI/LEXAN

- 8" .5"DIA ALUM. 6061-T6
- 40 LINKS OF #25 HD CHAIM
- 42 LINKS OF #25 HD CHAIN
- 2- #25 MASTER LINKS

THIS DRAWING WAS DEVELOPED FROM CONFIDENTIAL INFORMATION AND MAY NOT BE DUPLICATED OR THE INFORMATION DISCLOSED WITHOUT WRITTEN AUTHORIZATION FROM THUD

UNLESS OTHERWISE SPECIFIED ALL TOLERANCES WILL BE

THUD RACING
1239 COMSTOCK STREET
ANYTOWN USA
A DIV. OF: HONEY MAY IT INC.

DRAWN BY:

TJL

DATE:

9/6/2010

DESCRIPTION

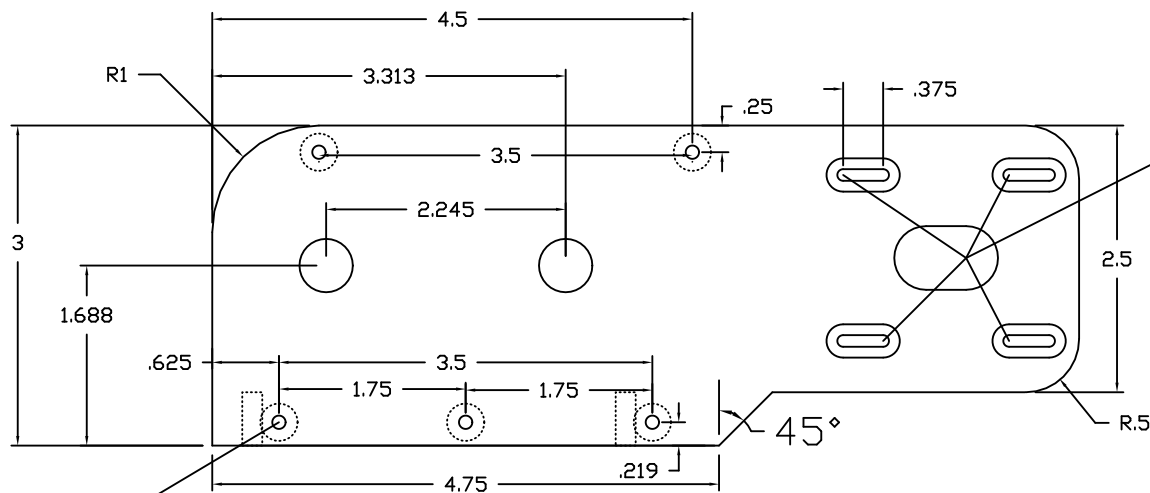
FREE PLANS

PRINT NUMBER

BOM

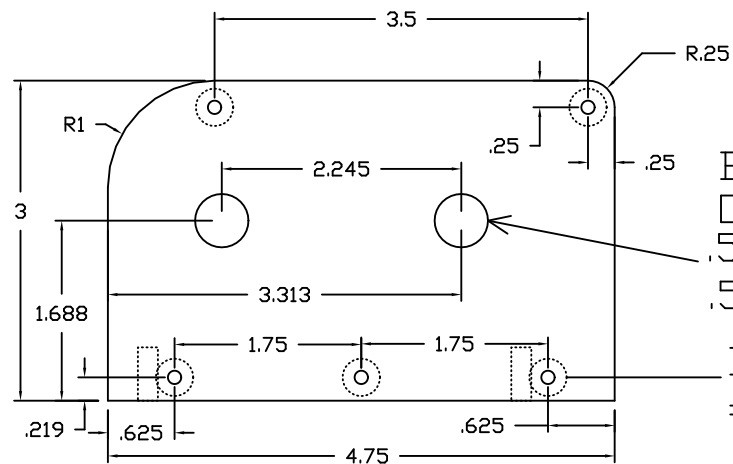
CUSTOMER \ COMPONENT

PROGRAM

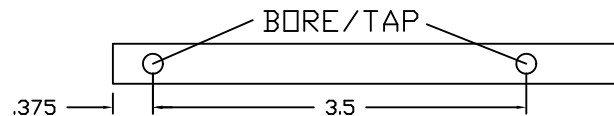


BORE/COUNTERSINK FOR FASTNER OF CHOICE
#8-32 ON PROTOTYPE

MATERIAL:
MIN-.25 X 3 6061-T6



BORE FOR BEARINGS
OF CHOICE
.5x.75x.156 (MY FAVORITE) .25" T SIDES
.5x1.125x.312 (INDUSTRUCABLE) .375" T SIDES
BORE/COUNTERSINK FOR FASTNER OF CHOICE
#8-32 ON PROTOTYPE



THIS DRAWING WAS DEVELOPED FROM CONFIDENTIAL
INFORMATION AND MAY NOT BE DUPLICATED OR
THE INFORMATION DISCLOSED WITHOUT WRITTEN
AUTHORIZATION FROM THUD

UNLESS OTHERWISE
SPECIFIED ALL TOLERANCES
WILL BE

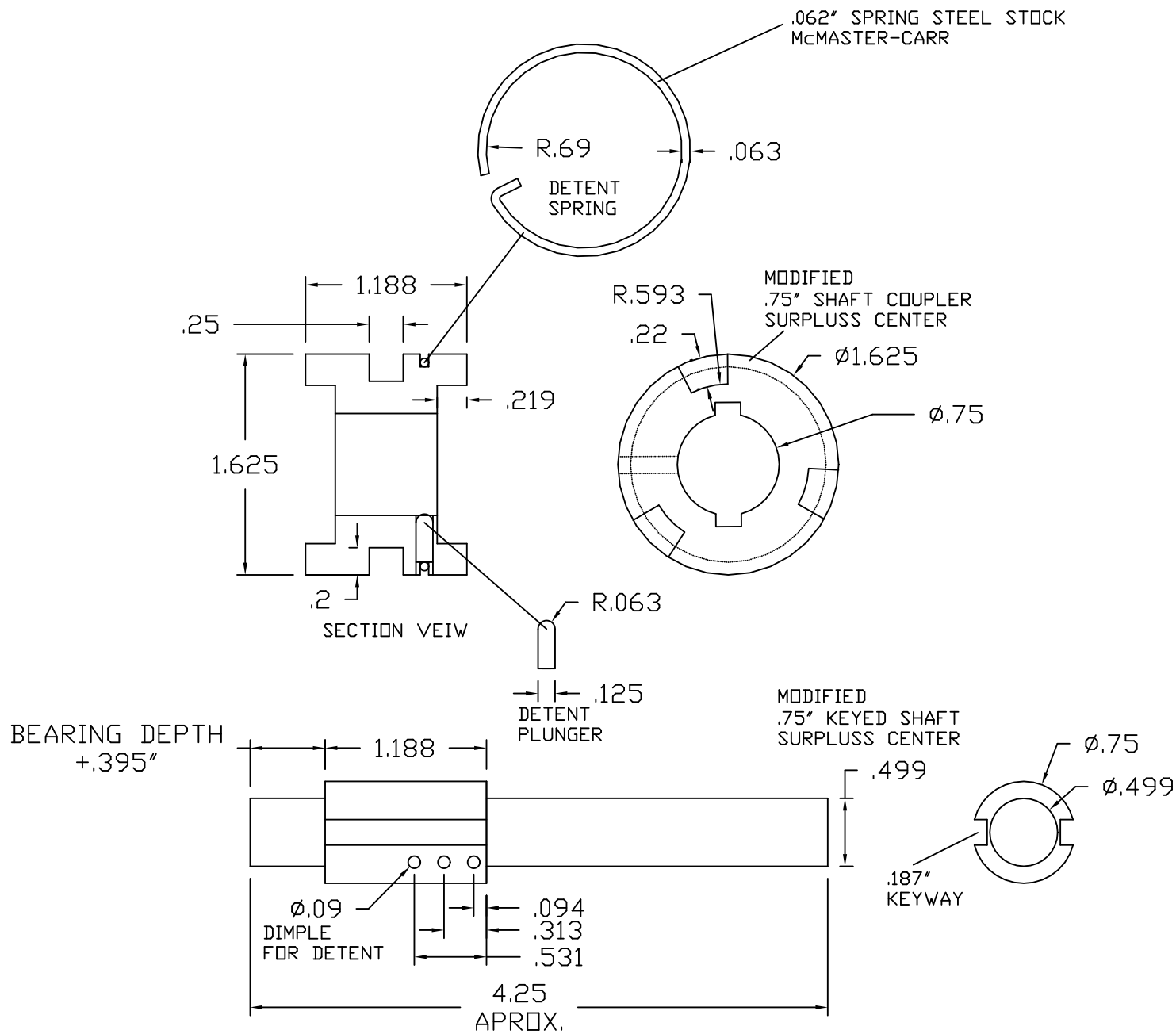
THUD RACING
1239 COMSTOCK STREET
ANYTOWN USA
A DIV. OF: HONEY MAY IT INC.

DRAWN BY:
TJL
CUSTOMER \ COMPONENT

DATE:

DESCRIPTION
2speed transmission 60%
1.86 redux IN LOW
1.18 redux IN HIGH

PRINT NUMBER
SIDES
PROGRAM



THIS DRAWING WAS DEVELOPED FROM CONFIDENTIAL
INFORMATION AND MAY NOT BE DUPLICATED OR
THE INFORMATION DISCLOSED WITHOUT WRITTEN
AUTHORIZATION FROM THUD

UNLESS OTHERWISE
SPECIFIED ALL TOLERANCES
WILL BE

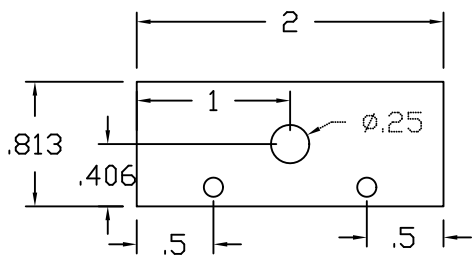
THUD RACING
1239 COMSTOCK STREET
ANYTOWN USA
A DIV. OF: HONEY MAY IT INC.

DRAWN BY:
TJL
CUSTOMER \ COMPONENT

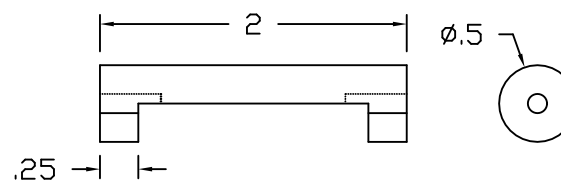
DATE:

DESCRIPTION
FREE PLANS

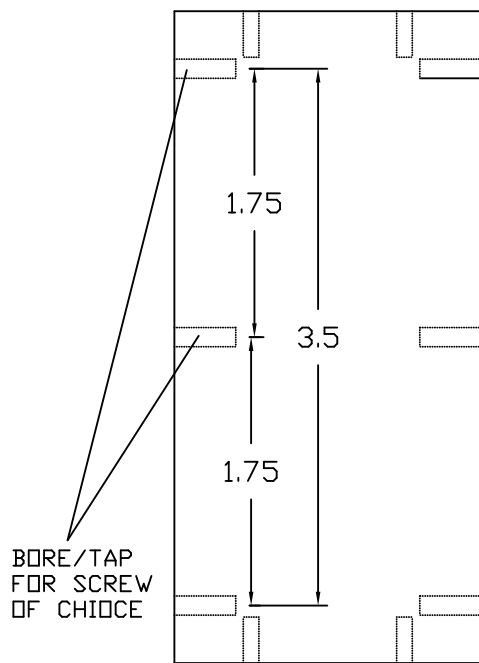
PRINT NUMBER
DOG HUB/SHAF
PROGRAM



ENDS-2 REQ.

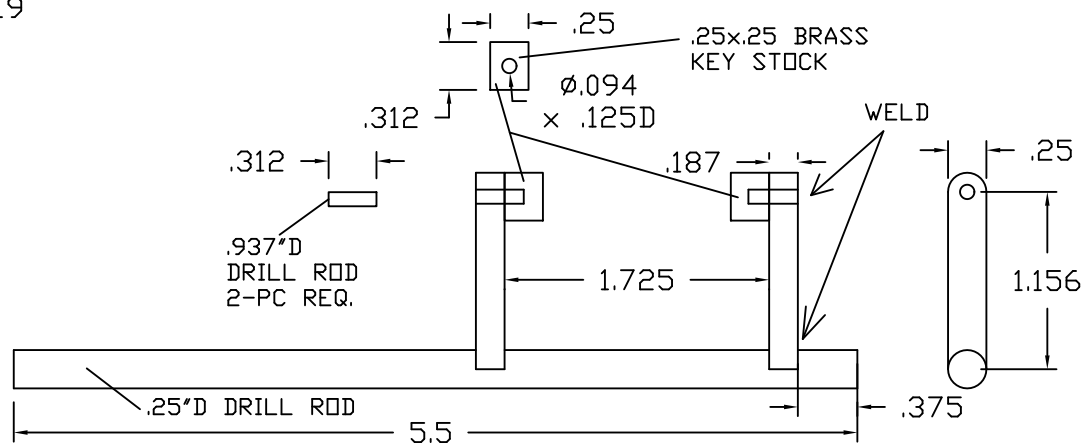
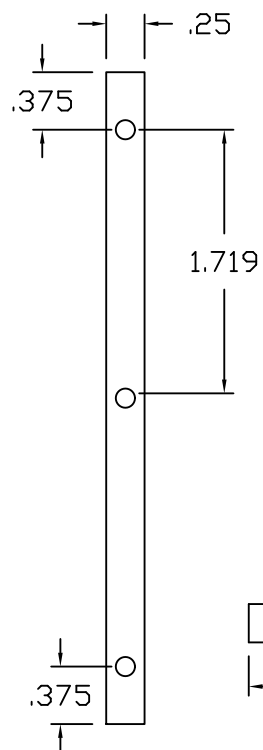


UPPER SPREADER
2 REQUIRED
(ONLY 1 NEEDS SCALOP)



#6-32 ON ENDS

BOTTOM



SHIFTING FORK ASSEMBLY

THIS DRAWING WAS DEVELOPED FROM CONFIDENTIAL INFORMATION AND MAY NOT BE DUPLICATED OR THE INFORMATION DISCLOSED WITHOUT WRITTEN AUTHORIZATION FROM THUD

UNLESS OTHERWISE SPECIFIED ALL TOLERANCES WILL BE

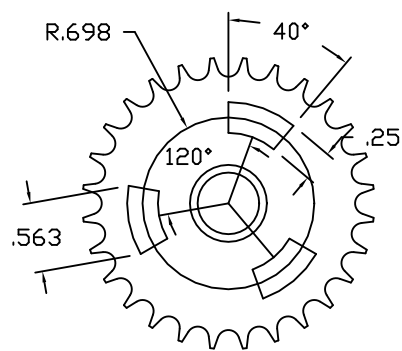
THUD RACING
1239 COMSTOCK STREET
ANYTOWN USA
A DIV. OF: HONEY MAY IT INC.

DRAWN BY:
TJL
CUSTOMER \ COMPONENT

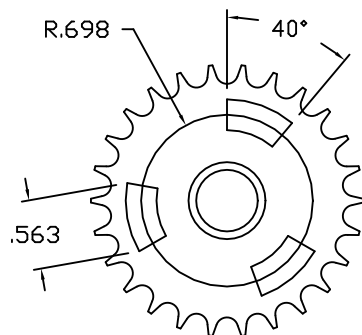
DATE:

DESCRIPTION
FREE PLANS

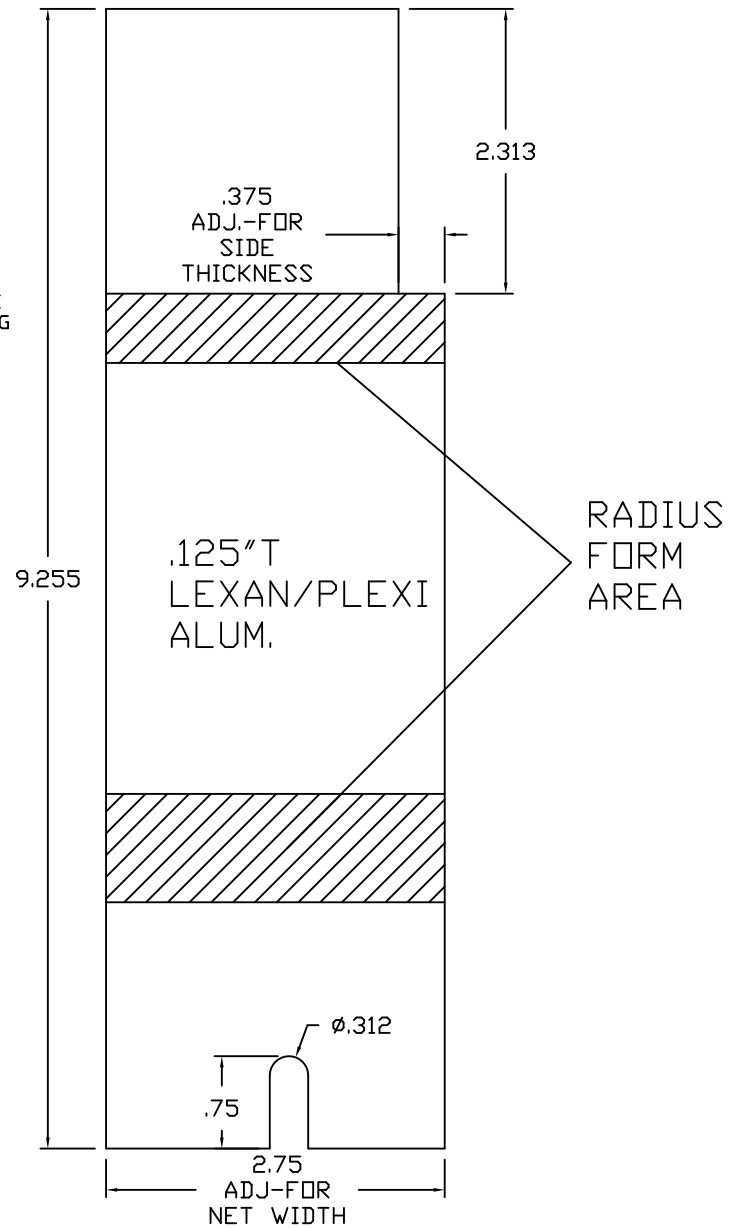
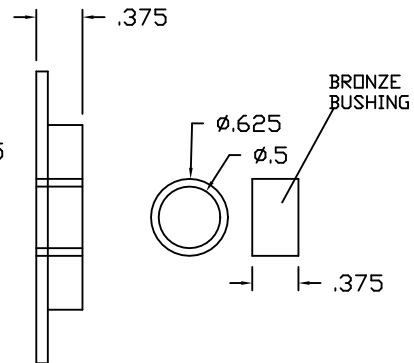
PRINT NUMBER
PARTS
PROGRAM



MODIFIED 28T SPROCKET
SURPLUS CENTER



MODIFIED 26T SPROCKET
SURPLUS CENTER



THIS DRAWING WAS DEVELOPED FROM CONFIDENTIAL
INFORMATION AND MAY NOT BE DUPLICATED OR
THE INFORMATION DISCLOSED WITHOUT WRITTEN
AUTHORIZATION FROM THUD

UNLESS OTHERWISE
SPECIFIED ALL TOLERANCES
WILL BE

THUD RACING
1239 COMSTOCK STREET
ANYTOWN USA
A DIV. OF: HONEY MAY IT INC.

DRAWN BY:
TJL
CUSTOMER \ COMPONENT

DATE:

DESCRIPTION
FREE PLANS

PRINT NUMBER
PARTS
PROGRAM